



April 3, 2023

ADDENDUM NO.: One

TO ALL OFFERORS:

REFERENCE: Request for Proposal No: **RFP# ADL-1178**
Dated: **March 24, 2023**
Commodity: **Motorcoach Buses**
RFP Closing On: **April 25, 2023 @ 2:00 P.M**

Please note the clarifications and/or changes made on this proposal program:

1. RFP# ADL-1178, Motorcoach Buses, closing April 11, 2023 @2:00 P.M. shall be extended to a new closing date/time of April 25, 2023 @ 2:00 P.M.
2. Vendor Question: Can I get additional information about the condition of your trade in vehicle mechanically and cosmetically? Are any pictures available?
 - a. *Photos and maintenance log of trade in bus have been attached to the RFP# ADL-1178, Motorcoach Buses, on April 3, 2023 with addendum # one.*
3. Vendor Question: Under Special Requirements, item 5 says it shall have lavatory accessibility. Does that mean wheelchair accessible?
 - a. *The lavatory does not need to be wheelchair accessible*
4. Vendor Question: Item 8 says it shall have a camera system. Can you be more specific about how many cameras, DVR, brand, etc.?
 - a. *We'd like to see an 8-camera system minimum. Inside facing driver, inside view on passengers, facing outside on windshield, all 4 corners to cover the entire parameter of the bus. Brand is unimportant.*
5. Vendor Question: Considering that this is a multiyear bid, how will any future trade in vehicles be addressed? Will vehicles be traded in by other VASCUPP members? If so, can they be handled on a case-by-case basis?
 - a. *Future trade-ins will be handled on a case-to-case basis. Other VASCUPP organizations may potentially be trading in buses as well when utilizing the contract.*
6. Vendor Question: Statement of Needs Line 6 – Describe your firm's ability to provide inspection/test drive services and willingness to bring the vehicle to James Madison University. *Would this be a 1-day demonstration/test drive?*

MSC 5720
752 Ott Street, Room 1042
Wine Price Building
Harrisonburg, VA 22807
Office of 540.568.3145 Phone
PROCUREMENT SERVICES 540.568.7935 Fax

- a. This would depend on the company and what they are able and willing to provide. A 1-day demonstration/test drive would be an example of what you could provide. JMU can be flexible on options.*
7. I know this is an annual contract with renewals, is there any estimates on a possible quantity (regardless of size)? Can you tell us how many vehicles were purchased on the previous contract?
- a. This will be a newly established cooperative contract. We estimate three or four buses will be purchased over the term of the contract by JMU. There is also the possibility of other VASCUPP organizations using this contract. There are no guarantees on quantity.*

Signify receipt of this addendum by initialing "Addendum #1 _____" on the signature page of your proposal.

Sincerely,



Aaron Largent
Buyer Senior
Phone: (540-568-4160)

Maintenance Log- by descending order

Work Order	Description
23-428978	300742- E&G- BUS HAS A CHECK ENGINE LIGHT ON GOES OUT TOMORROW PER DOUG 3/27/23 BUS HAS A DRIVERS SIDE MIRROR THAT IS LOOSE AND DRIVERS SIDE BLIND THAT DOESN'T WORK ALSO HAS A SQUEAL NOISE SOMETIMES TURNING PER GEORGE
23-424897	300742 - E&G - RODENT PROOF THE COOLANT HOSES THAT HAVE BEEN CHEWED ON.
23-424758	300742-E&G- 1/4 BYPASS HOSE NEEDS TO BE REPLACED (BLUE) TEN
22-420524	300742 - E&G - CUSTOMER STATES BUS HAS A HEADLAMP OUT. RF 1/4/23- NO START
22-420099	300742 - E&G - REQUEST TO DO REPAIRS ON LEFT AND RIGHT SIDE OF BUS AND REPLACE 2 SIDE LIGHTS. I WILL DO WORK IN HOUSE
22-415204	300742 - E&G - 10.000 MILE SERVICE TEN
22-414761	300742 - E&G - SERVICE CALL NO START, SPORTS PARK
22-410473	300742 - E&G - JUMP START BUST AT SOUTH MAIN
22-404881	300742 - E&G - VIRGINIA STATE INSPECTION. EXEMPT FROM CLEANING
22-403385	300742 - E&G - REQUEST TO HAVE TOP GUN TO REPAIR BACK OF BUS REPLACE BACK BUMPER AND PAINT RIGHT REAR SIDE
22-403340	300742 - E&G - NO START AT SOUTH MAIN
22-402668	300742 - E&G - SERVICE AND CLEANING OF VEHICLES (PREPARING FOR NEXT RENTAL) DO NOT USE BEFORE 6/1/22
22-399280	FUELING VEHICLES IN ZONE 3
22-398717	300742 - E&G - REQUEST TO TAKE TO TOP GUN FOR BODY REPAIRS
22-398490	300742 - E&G - BUS WILL NOT START AT SOUTH MAIN. CHARGER PLUG IS MELTED
21-382725	300742 - E&G - 10.000 MILE SERVICE - TEN/ NO START AT MOTOR POOL
21-381956	300742 - E&G - REQUEST TO HAVE REPAIRS DONE TO BUS DUE TO AN ACCIDENT
21-378798	300742 - E&G - REPLACE LEFT TAG AXLE HUB CAPS AND COVERS DAMAGED AND MISSING
21-371172	300742 - E&G - VIRGINIA STATE INSPECTION. EXEMPT FROM CLEANING

21-367629	300742- E&G - SERVICE AND CLEANING OF VEHICLES (PREPARING FOR NEXT RENTAL) DO NOT USE BEFORE 6/1/21
21-365965	FUELING VEHICLES IN ZONE 3
21-357042	300742 - E&G - HAS A WARNING LIGHT ON IN THE DASH. 3/2/21 INSTALL TOUCH PADS 4/28/21 TOILET IS CLOGGED UP
20-348592	300742 - E&G - NEED TO INSTALL DRIVERS COVID 19 PARTITION 9/16/20 NEED TO REPLACE THE AIR LINES UP FRONT
20-347211	300742 - E&G - REQUEST TO TAKE TO TOP GUN AUTO BODY FOR PAINT REPAIRS
20-346635	300742 - E&G - BUS WRITE UP TO REPAIR WINDSHIELD 9/15/20 ORDER FRONT BRAKE HOSES
20-342789	300742 - E&G - VIRGINIA STATE INSPECTION. EXEMPT FROM CLEANING; AC ISSUE; HATCH/FAN INSTALLATION 7/22/20
20-342548	300742 - E&G - THIS REQUEST IS TO PAY AN INVOICE FROM MCI FOR CEILING EXHAUST FAN AND DRIVER BARRIER FOR THIS MOTORCOACH IN RELATION TO COVID-19.
20-341810	300742 - E&G - SERVICE CALL: NO START AT MOTOR POOL. THEN NOTICED FUEL LEAK
20-339743	FUELING VEHICLES IN ZONE 3
20-339310	300742 - E&G - SERVICE AND CLEANING OF VEHICLES (PREPARING FOR NEXT RENTAL) DO NOT USE BEFORE 6/1/20
20-336489	300742 - E&G - SERVICE CALL: NO START
20-332667	300742 - E&G - NEEDS A 10,000 MILE SERVICE
20-329882	300742 - E&G - BUS WRITE UP PASSENGER SIDE LUGGAGE BAY DOOR CABLE IS BROKEN
19-326729	300742 - E&G - THIS REQUEST IS TO PAY AN INVOICE FROM CUMMINS FOR REPAIRS ON MOTOR COACH.
19-326269	300742 - E&G - BROKEN DOWN IN CONNECTICUT YESTERDAY -BM; THEN SERVICE CALL: NO START 12/11/19; SERVICE CALL AGAIN: NO START AGAIN 12/12/19
19-325165	300742 - E&G - BUS WRITE UP. BLIND IS COMING LOOSE DRIVER SIDE; THEN SERVICE CALL FOR OIL LEAK 11/7/19
19-323082	300742 - E&G - NEED TO REGEN THE BUS FOR FOOTBALL TRIP

19-321694	300742 REGEN BUS -9/26/19; THEN MIRROR LOOSE 9/27/19
19-318915	300742 - E&G - MARKER LIGHT BROKEN
19-318594	300742 - E&G - REGEN - PER DOUG
19-318089	300742 - E&G - THIS REQUEST IS TO PAY AN INVOICE FOR SERVICE WORK THAT WILL BE COMPLETED BY CUMMINS ATLANTA IN WINCHESTER, VA.
19-314363	300742 - E&G - WRITE-UPS: NOT MUCH AIR COMING OUT ON LEFT SIDE, DEFROST AND VENTS.; THEN SERVICE CALL: NO START 8/6/19
19-313720	300742 - E&G - REQUEST TO TAKE TO WINDSHIELD CITY TO HAVE WINDSHIELD REPAIRED DUE TO ROCK CHIP
19-312342	300742 - E&G - VIRGINIA STATE INSPECTION. EXEMPT FROM CLEANING. SUMMER CHECK-OVER FOR DOUG 6/27/19
19-311710	300742 - E&G - NEW DECAL FOR BUS
19-310484	300742 - E&G - SERVICE AND CLEANING OF VEHICLES (PREPARING FOR NEXT RENTAL)
19-308458	FUELING VEHICLES IN ZONE 3
19-305587	300742 - E&G - NEED TO REPLACE THE TAG AXLE TIRES
19-299605	300742 - E&G - SERVICE CALL: NO START AT SOUTH MAIN -BLW. THEN WRITE-UP FOR WIPER ISSUES 2/25/19; THEN HEAD LIGHT OUT 3/13/19
19-299164	300742 - E&G - CHECK DIRECT TV AND TV. ARE MESSED UP PER GEORGE
18-293553	300742 - E&G - SERVICE CALL: NO START AT MOTOR POOL; LIGHT ISSUE 12/14/18; SERVICE CALL- NO START AGAIN 12/17/18
18-292987	300742 - E&G - 10,000 MILE SERVICE DUE
18-288290	300742 - E&G - CHECK OVER FOR GEORGE
18-287132	300742 - E&G - SERVICE CALL: DIRECT TV/WIFI ISSUES
18-285846	300742 - E&G - CEL ON
18-282956	300742 - E&G - CHECK OVER FOR DOUG.
18-280558	300742 - E&G - NEEDS DOOR GLASS FROM MCI
18-279563	300742 - E&G - BUS HAS A NOISE IN IT PER GEORGE. NEED TO REPLACE THE ALTERNATORS AND 4 PULLEYS. EXHAUST LEAK 7/30/18
18-277769	300742 - E&G - SERVICE CALL: RIGHT TAG AXLE TIRE FLAT -BM. 7/18/18 FIRE SUPPRESSION SYSTEM HAS A FAULT
18-277567	300742 - E&G - VIRGINIA STATE VEHICLE INSPECTION. SERVICE CALL: NO START 7/17/18
18-274366	300742- E&G - SERVICE AND CLEANING OF VEHICLES (PREPARING FOR NEXT RENTAL)
18-272831	FUELING VEHICLES IN ZONE 3
18-272477	300742 REQUEST TO TAKE TO PREMIER AUTO BODY FOR DAMAGE REPAIR ON RIGHT MIDDLE DOORS

18-270873	300742 - E&G - 10,000 MILE SERVICE DUE.
18-270129	#300742 - E&G - BUS HAS A FEW LIGHTS OUT PER WRITE-UPS.
18-268172	300742 - E&G - NEED TO REPLACE THE FUEL FILTERS AND AD ADDITIVE
18-264302	300742 - E&G - 10,000 MILE SERVICE DUE
18-263317	300742 - E&G - THIS REQUEST IS TO PAY AN INVOICE FROM MCI FLEET SUPPORT.
18-259380	300742 - E&G - NEED TO ORDER AIR BAGS FOR TAG AXLE
17-258787	300742 - E&G - STILL HAS TRANS. ISSUES OR ISSUES OF SOME SORT (AFTER MCI HAS LOOKED AT IT)
17-257071	300742 - E&G - SERVICE CALL: NO START
17-255424	300742 - E&G - DOOR ISSUES
17-252262	300742 - E&G - LEAKING AROUND TOP DUMP VALVE ON THE TOILET
17-249354	300742 - E&G - SERVICE CALL: NO START
17-248273	300742 - E&G - WRITE-UPS: ANTENNAE BENT & ROOF LEAKING (9/11/17)
17-246422	300742 - E&G - LIGHTS AND BATTERIES
17-243614	300742 - E&G - REQUEST TO TAKE TO WINDSHIELD CITY FOR WINDSHIELD TO BE REPLACED
17-242604	300742- E&G - VIRGINIA STATE VEHICLE INSPECTION
17-241226	300742 - E&G - BATTERIES KEEP GOING DEAD REPLACE BATTERIES PER DOUG JUDY
17-240152	FUELING VEHICLES IN ZONE 3
17-238247	300742 - E&G - SERVICE AND CLEANING OF VEHICLES (PREPARING FOR NEXT RENTAL) DO NOT USE UNTIL 6/1/17
17-234498	300742 - E&G - BUS RUNS BAD. CUTS OFF
17-230551	300742 - E&G - SERVICE CALL: WATER LEAK - BM
17-227522	300742 - E&G - NEEDS 2 TIRES - BM
16-224036	300742 - E&G - CALL-IN FOR SERVICE CALL: NO START-BLW
16-223054	300742 - E&G - 10,000 MILE SERVICE TEN
16-220481	300742 - E&G - SERVICE CALL. FUEL LEAK .- TEN
16-219486	ZONE 3 MASTER - E&G - "GPS INSTALLATION" ON FOLLOWING ASSETS

16-218828	300742 - E&G - REQUEST TO FIX SIDE DAMAGE AND TAKE TO PREMIER FOR PAINT WORK
16-215237	300742 - E&G - REPAIR WRITE UPS - BM
16-213007	300742 - E&G - THIS REQUEST IS TO PAY AN INVOICE FROM PREMIER FOR AUTO BODY WORK.
16-207229	300742- E&G - VIRGINIA STATE VEHICLE INSPECTION
16-207134	FUELING VEHICLES IN ZONE 3
16-204753	300742 - E&G - BUS NEEDS SERVICE
16-193861	300742 - E&G - DIRECT TV NOT WORKING
16-189864	300742 - E&G - 10.000 MILE SERVICE - BM
16-188754	300742 - E&G - LIGHTS OUT.
15-188376	300742 - E&G - SERVICE CALL
15-186039	300742 - E&G - THIS REQUEST IS TO PAY AN INVOICE FROM MCI FLEET SUPPORT FOR LABOR ON REPAIRS.
15-183418	300742 - E&G - REPLACE RIGHT AND LEFT WINDSHIELDS/PER DOUG JUDY - TEN
15-175897	300742 - E&G - RECALL #?, BULLETIN #424 & CUMMINS #C1638 - TO VA TRUCK CENTER CMC
15-174865	300742 - E&G - SERVICE CALL FOR NO START TEN
15-173006	300742 - E&G - 10.000 MILE SERVICE - BM
15-172241	300742 - E&G - VIRGINIA STATE VEHICLE INSPECTION
15-170217	300742 - E&G - CHECK LIGHTS - BM
15-168140	FUELING VEHICLES IN ZONE 3
15-165719	300742 - E&G - THIS REQUEST IS TO PAY FOR OUTSOURCE BODYWORK THAT WILL BE COMPLETED BY PREMIER.
15-160746	300742 - E&G - BM - 10.000 MILE SERVICE
15-158423	300742 - E&G - NO HEAT - BM
14-151061	300742 - E&G - 10.000 MILE SERVICE - BM * THIS IS A NEW WORK ORDER FOR 14-151022, WRONG PROPERTY - MAM 10/28/14
14-151022	300742 - E&G - 10.000 MILE SERVICE - BM * THIS IS A NEW WORK ORDER FOR 14-149577, WRONG PROPERTY - MAM 10/27/14

14-151019	300742 - E&G - BATTERY LIGHT ON - BM * THIS IS A NEW WORK ORDER FOR 14-150261, WRONG PROPERTY - MAM 10/27/14
14-149016	300742 BM - E&G - HAVE TIRES INSTALLED
14-142845	300742 - CHECK OUT DOOR GLASS - BM
14-138818	300742 - E&G - VIRGINIA STATE VEHICLE INSPECTION
14-134116	FUELING VEHICLES IN ZONE 3
14-131195	300742 - E&G - BM - 10.000 MILE SERVICE
14-123575	300742 - E&G - REPLACE FOG LIGHTS TEN
14-123513	300742 - E&G - REPLACE FOG LIGHT - TEN
13-120717	300742 - E&G - REPAIR WRITE UPS / 10,000 MILE SERVICE - TEN
13-117911	300742 BM BATTERY LIGHT ON
13-116362	300742 - E&G - CHECK HEATER CORE - BM
13-113121	300742 - E&G - LEFT FRONT DRIVER GLASS KNOCK OUT - BM
13-111672	300742 - E&G - CHANGE FUEL FILTERS TEN
13-109195	300742 - E&G - SERVICE CALL TO PREMIER AUTO BODY. NO START TEN
13-107522	300742 - E&G - THIS REQUEST IS FOR OUTSOURCE BODY WORK THAT WILL BE COMPLETED BY PREMIER.
13-106071	300742 - E&G - VIRGINIA STATE VEHICLE INSPECTION
13-106026	FUELING VEHICLES ZONE 3
13-100332	300742 - E&G - 10.000 MILE SERVICE
13-098956	300742 - E&G - REPAIR WRITE UPS - BM
13-094493	300742 - E&G - 10.000 MILE OIL CHANGE - BM
13-094433	300742 BM - E&G - INSTALL NEW INVERTER
13-094412	FUELING VEHICLES IN ZONE 3
13-090176	300742 - E&G - SERVICE CALL NO START TEN
13-089906	300742 - E&G - VEHICLE PREVENTIVE MAINTENANCE
12-089680	300742 - E&G - SERVICE CALL FOR NO START QG

12-085566	300742 - E&G - THIS REQUEST IS FOR AN OUTSOURCE WINDSHIELD REPAIR. WORK WAS COMPLETED BY WINDSHIELD CITY.
12-083107	300742 - E&G - THIS REQUEST IS FOR A SET OF HEAVY DUTY JUMPER CABLES. PURCHASED THROUGH FISHER. ATTN: LYNN USHRY
12-082829	300742 - E&G - THIS REQUEST IS TO PAY AN INVOICE FOR GRAPHICS AND INSTALLATION SERVICES. THIS WORK WAS COMPLETED BY VERNON.
12-081756	300742 - E&G - NO START AT SOUTH MAIN - BM
12-080721	300742 - E&G - VIRGINIA STATE VEHICLE INSPECTION





742

JAMES MADISON UNIVERSITY



JAMES MADISON UNIVERSITY

742



JAMES MADISON UNIVERSITY

JAMES MADISON UNIVERSITY

WITH COACH INDUSTRIES

9435



JAMES MADISON UNIVERSITY



MOTOR COACH INDUSTRIES





JMU

JAMES MADISON UNIVERSITY

JAMES MADISON UNIVERSITY

MOTOR COACH INDUSTRIES

59-639S



JAMES MADISON UNIVERSITY

742



742

JAMES MADISON UNIVERSITY





COOLANT:

CAUTION

DO NOT OPEN SURGE TANK CAP WHEN HOT

WARNING

TRANSMISSION OIL ALLISON TES-200

POWER STEERING OIL ALLISON TES-200

FLUSH LAVATORY RINSE

LAVATORY TANK SERVICE PROCEDURE

COOLANT.
DETROIT DIESEL
CORP:
POWER COOL PLUS
PREDILUTED 50/50
EXTENDED LIFE

PM INTERVAL:
EVERY 12 MONTHS,
USE DDC TEST KIT
#23523398, MCI
#23-05-0013 &
COOLANT EXTENDER
#23519400 MCI
#23-05-0012

SERVICE LIFE:
600,000 MILES
OR 4 YEARS

ONLY USE POWER
COOL PLUS
COOLANT AND
EXTENDER FOR
ALL ENGINES

06-14-1411

CAUTION

SPECIAL COOLANT FILL INSTRUCTIONS

FAILURE TO FOLLOW
MAY RESULT IN
COMPONENT
DAMAGE OR FAILURE

If coolant level falls
below bottom of sight
glass at any time
during fill procedure,
stop engine and add
coolant to "FULL
COLD"

1. Open center tunnel
valves, if closed
(See Section 6B
of Maintenance
Manual)
2. Fill to top of sight
glass
3. Run engine at low
idle for 3 minutes
with HVAC system
set to full heat
4. Turn engine off
and add coolant to
"FULL COLD"
5. Run engine at high
idle for 3 minutes
with HVAC system
set to full heat
6. Increase engine
speed to maximum
governed until
thermostat opens
7. Turn engine off,
allow coolant to
cool to ambient
temperature, and
fill to "FULL COLD"

06-14-1443 REV B

API CODE CJ-4
15W-40 (SUMMER)
OR 5W40 (WINTER)
ENGINE OIL FILL
08-11-1003

08-11-1003

185,000

#742

38 QUARTS 15-40

1-OIL BD7154

1-FUEL FF5776

1-FUEL PF9814

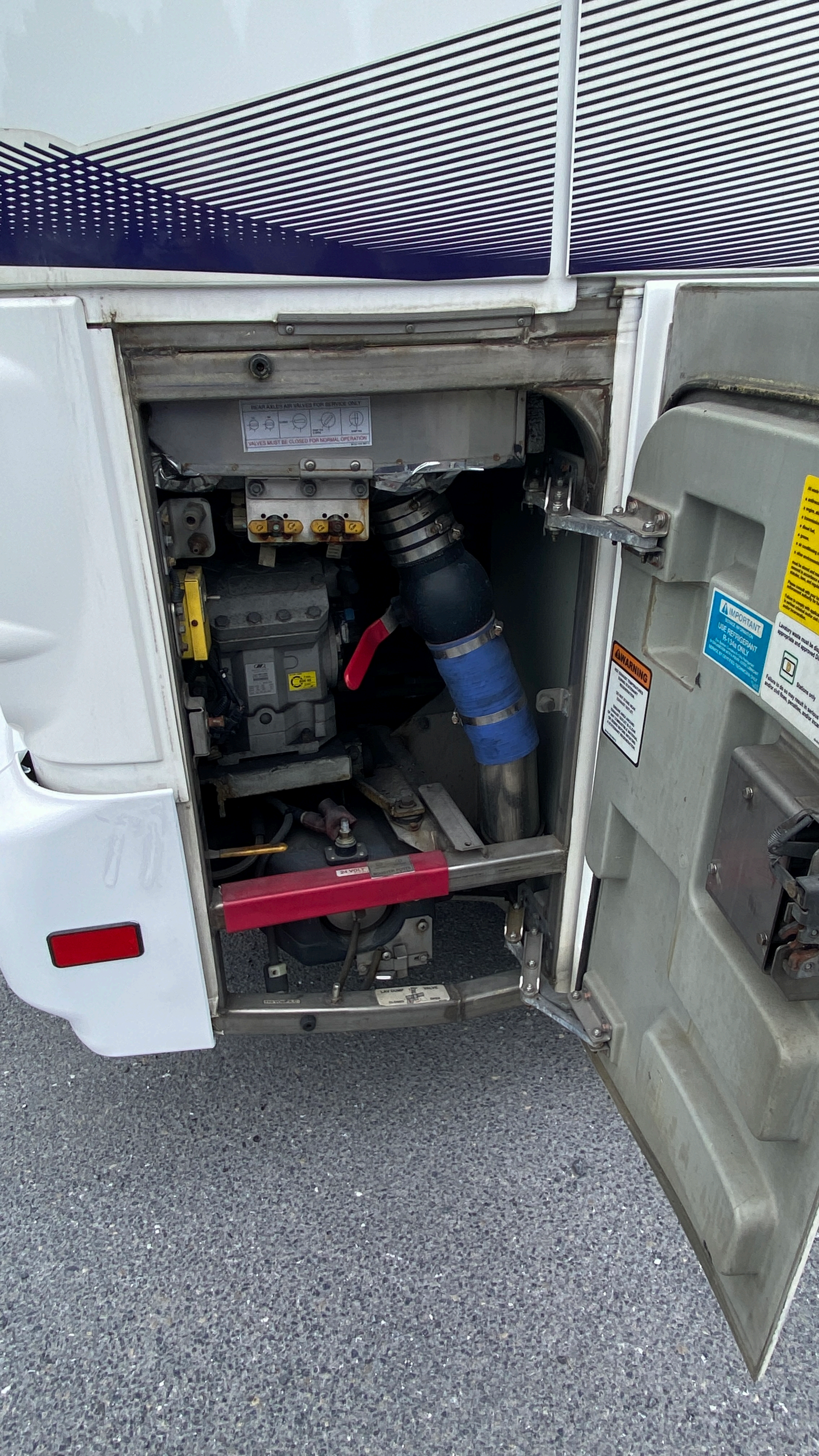
1-AIR 6774

BELT FAN 08-27-1041

BELT ALT. 08-27-1207DF

BELT AC. 08-27-1172

1-WATER 4113



REAR AXLE AIR VALVES FOR SERVICE ONLY
VALVES MUST BE CLOSED FOR NORMAL OPERATION

IMPORTANT
SERVICE INFORMATION
USE REFRIGERANT
R-134a ONLY
Do not use other refrigerants.
Improper use of other refrigerants may damage the system and void the warranty.

WARNING
Do not touch the refrigerant cylinder.
The cylinder is under high pressure and may become very hot.
Do not use the cylinder as a support.
Do not use the cylinder as a container for other materials.
Do not use the cylinder as a pressure vessel.

WARNING
Do not touch the refrigerant cylinder.
The cylinder is under high pressure and may become very hot.
Do not use the cylinder as a support.
Do not use the cylinder as a container for other materials.
Do not use the cylinder as a pressure vessel.

24 VOLT
BATTERY

VALVE



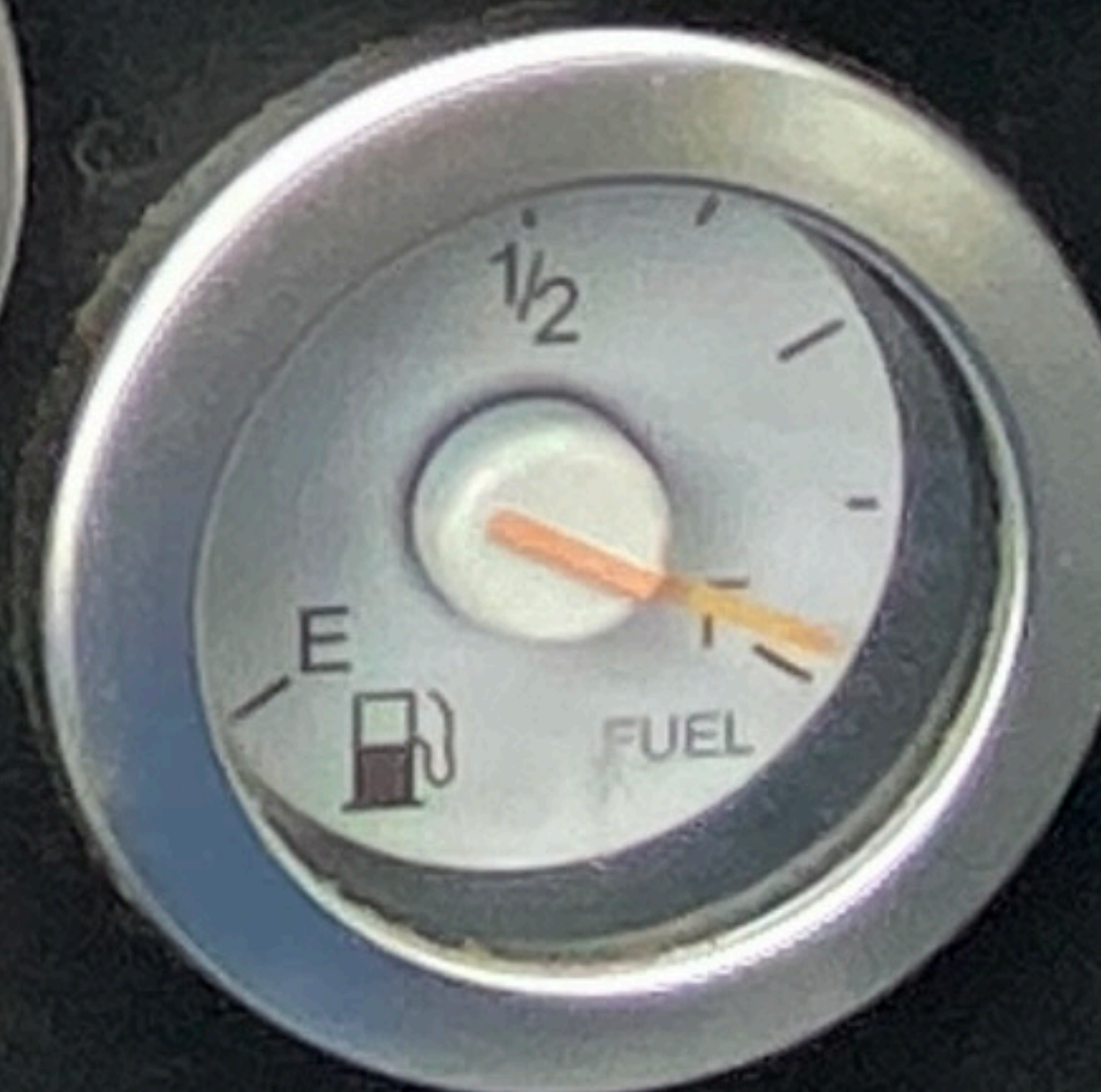
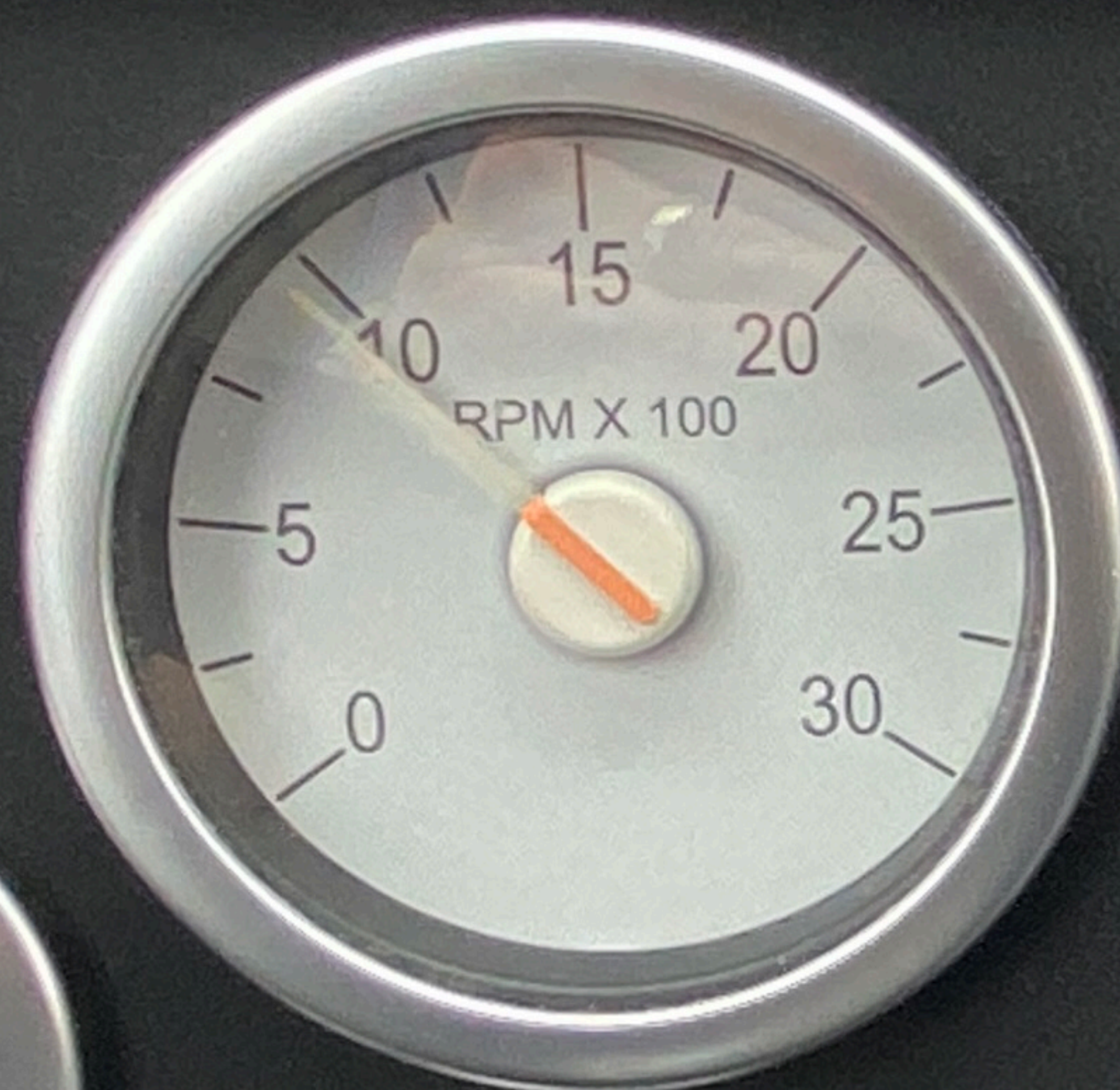
742

EXIT



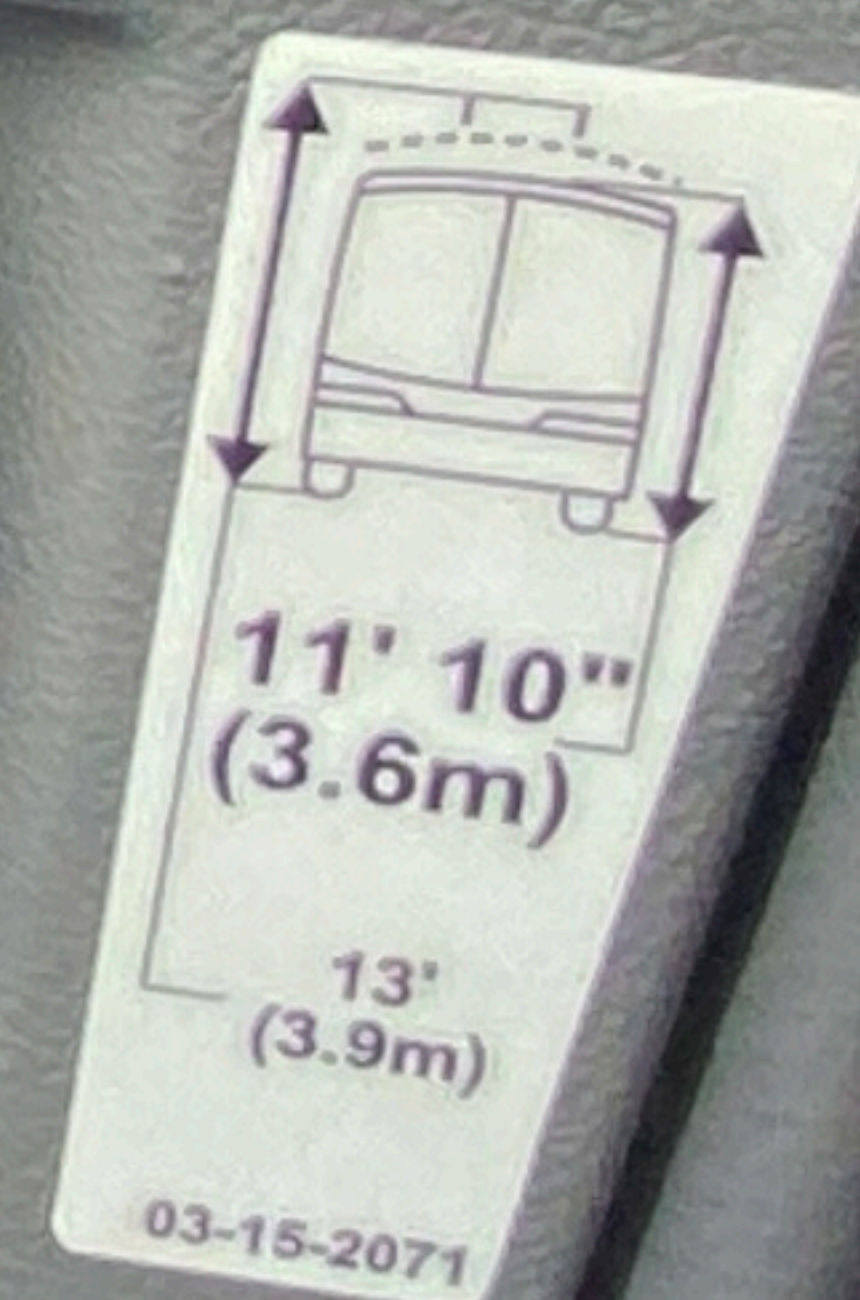
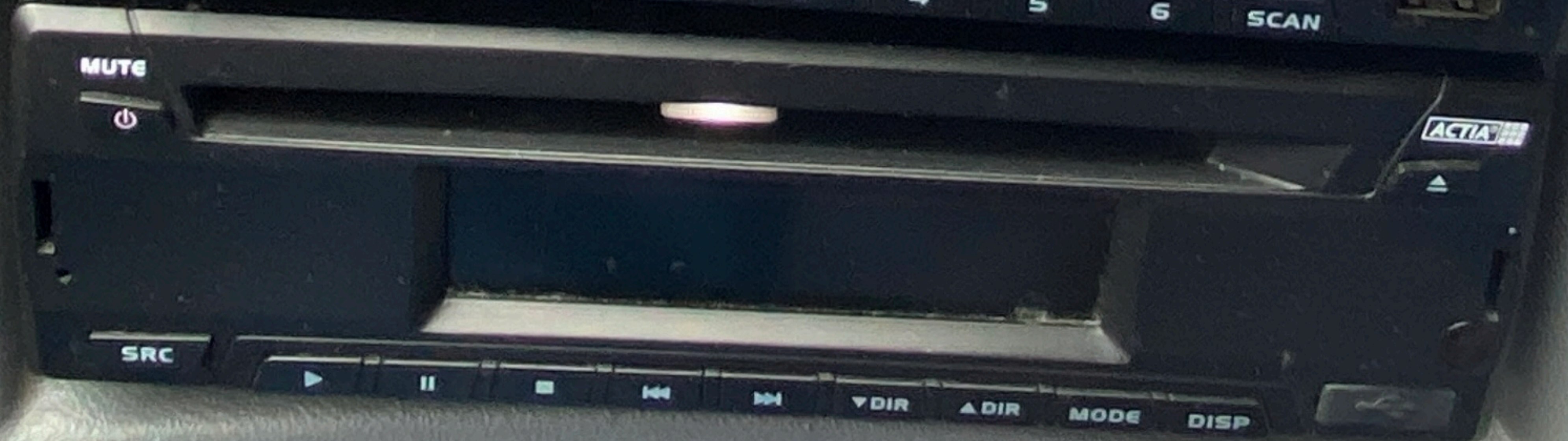
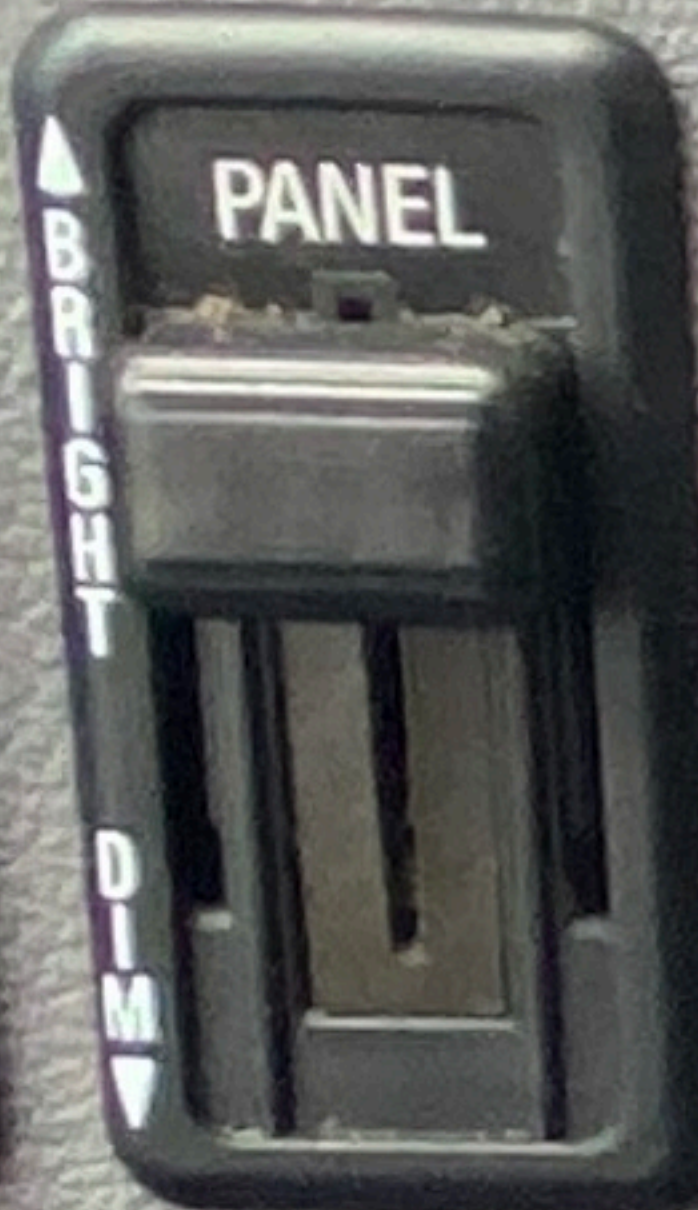
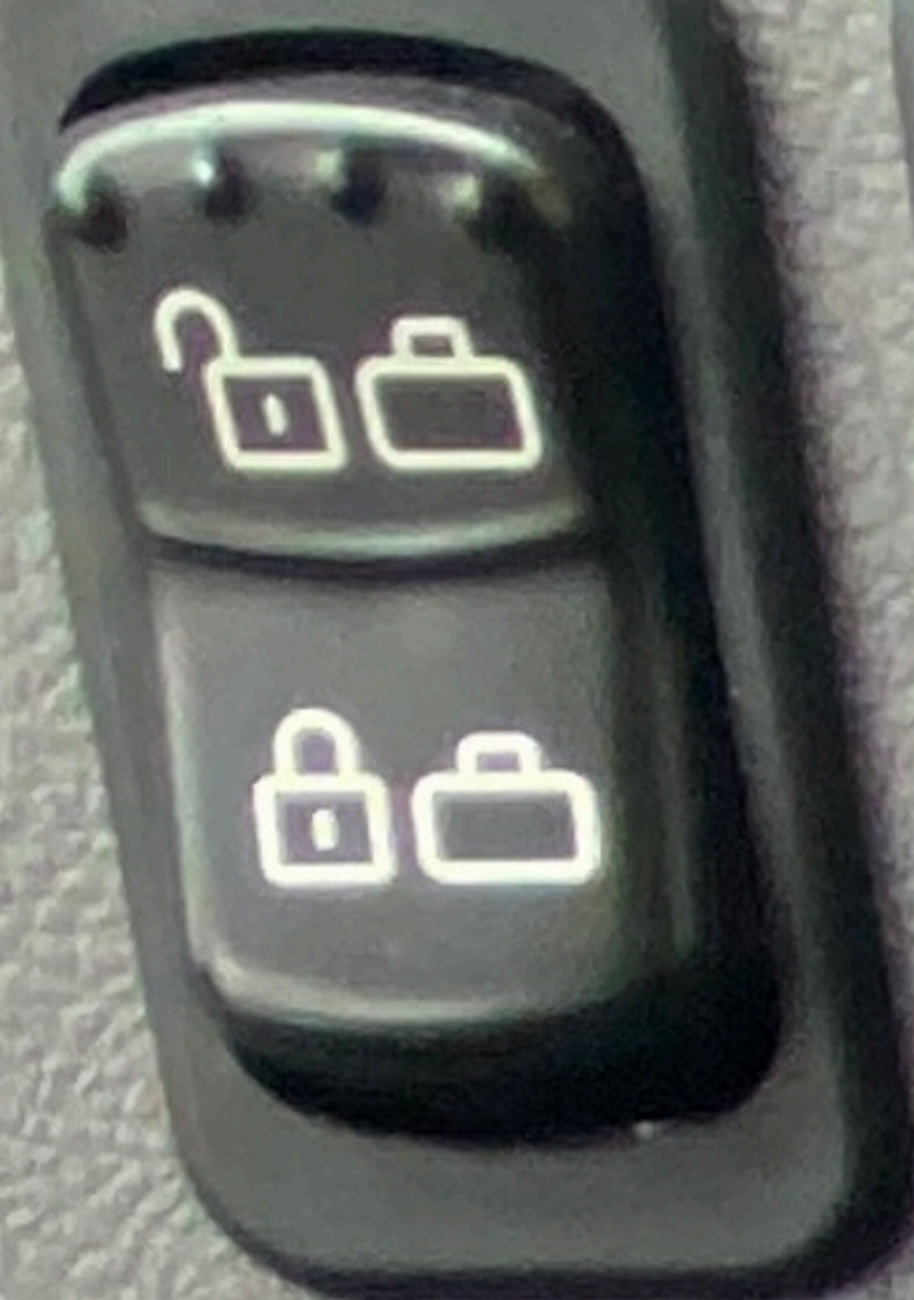


OPEN
DOOR

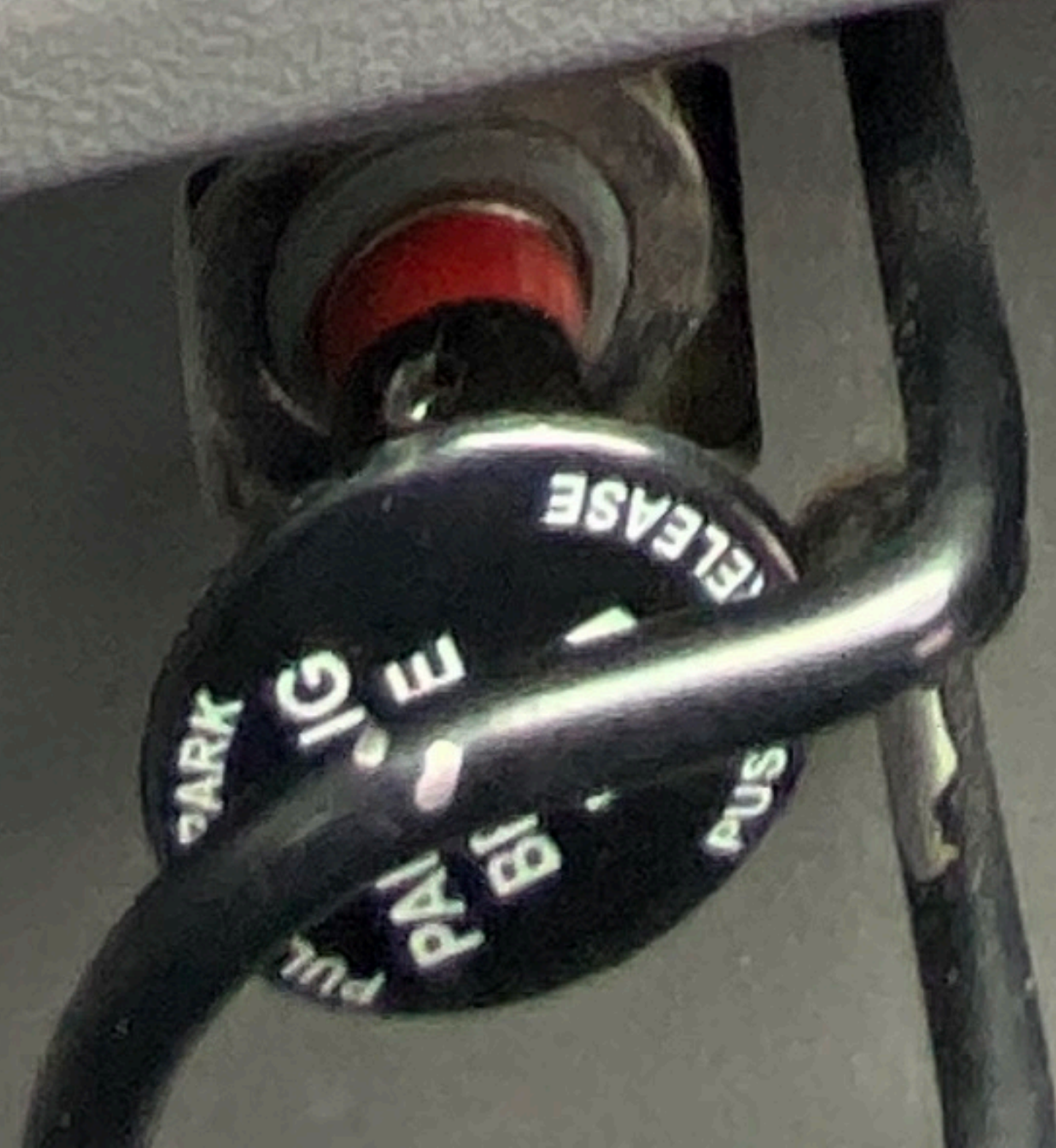
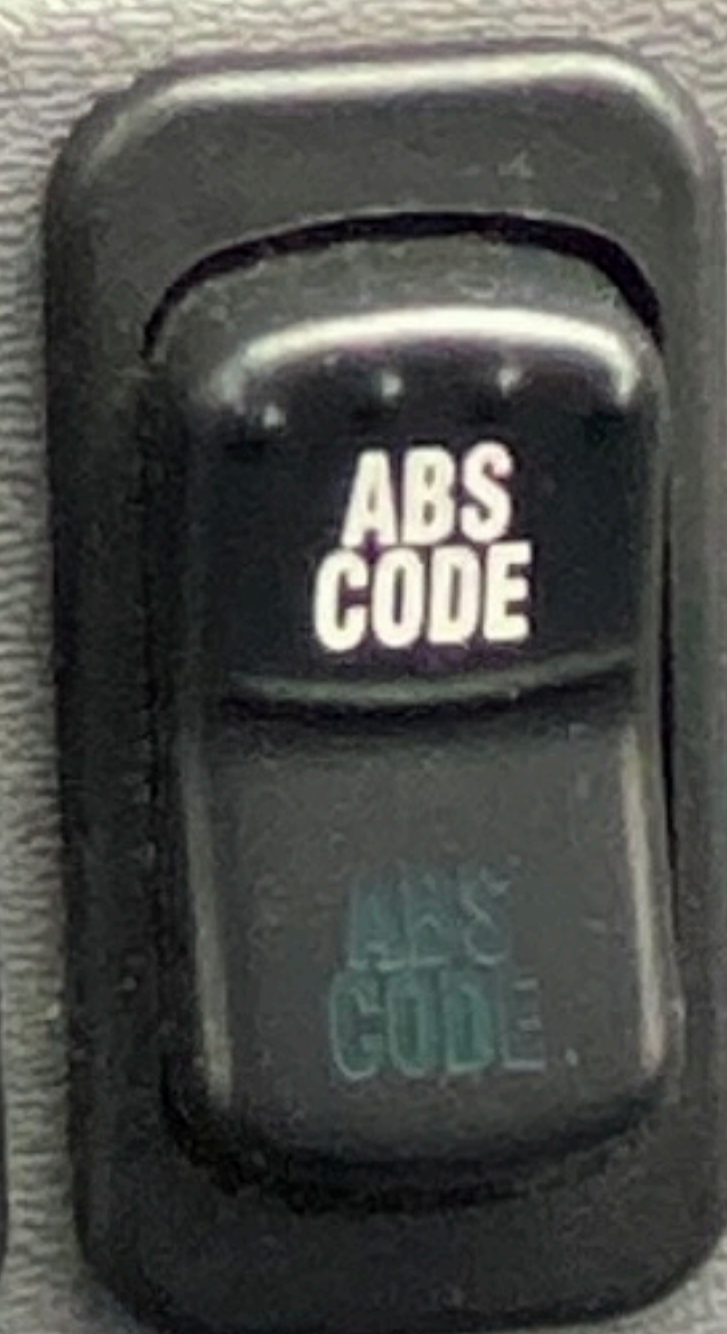


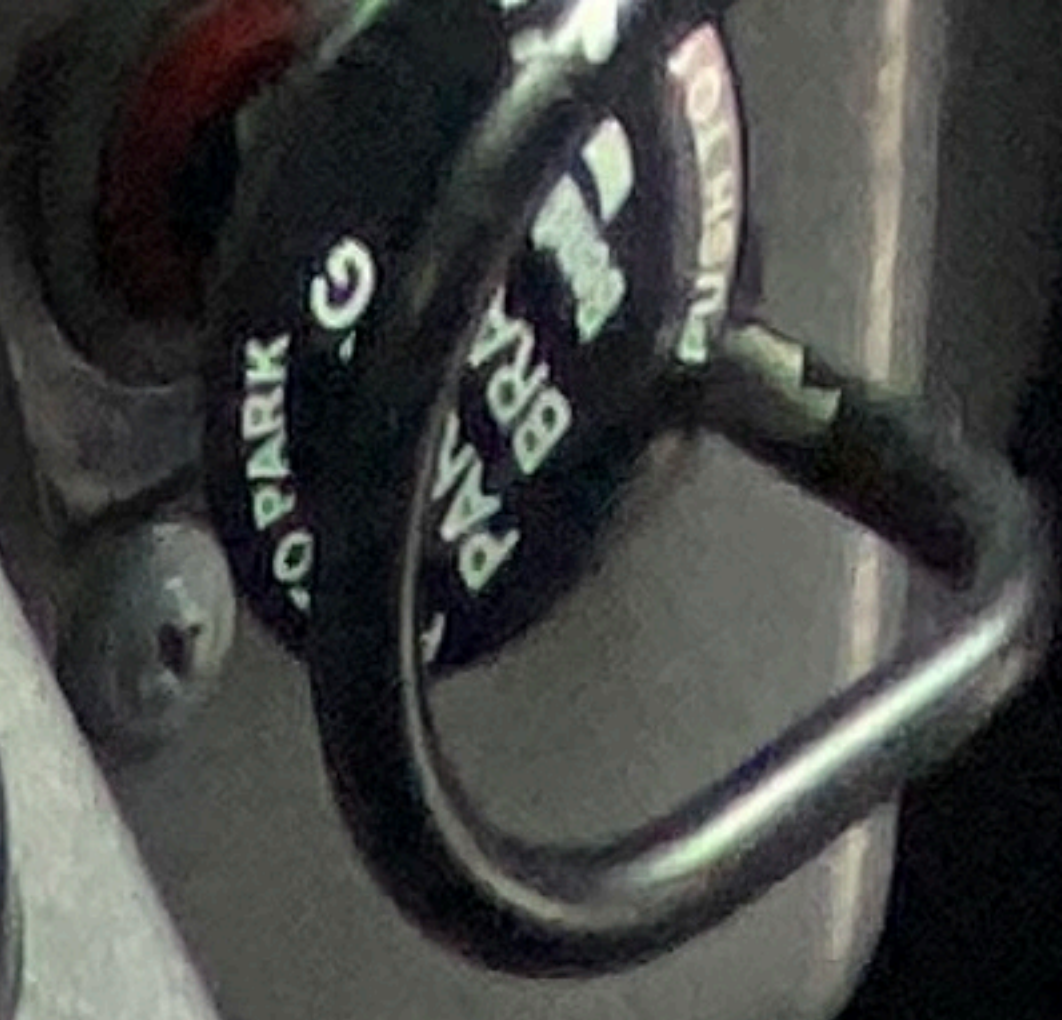
ULTRA LOW SULFUR DIESEL
(ULSD) FUEL
REQUIRED
15PPM MAXIMUM SULFUR
03-01-1555 REV A

DO NOT OPERATE
COAST



DO NOT OPERATE
BELOW
(90) kPa
03-15-1078

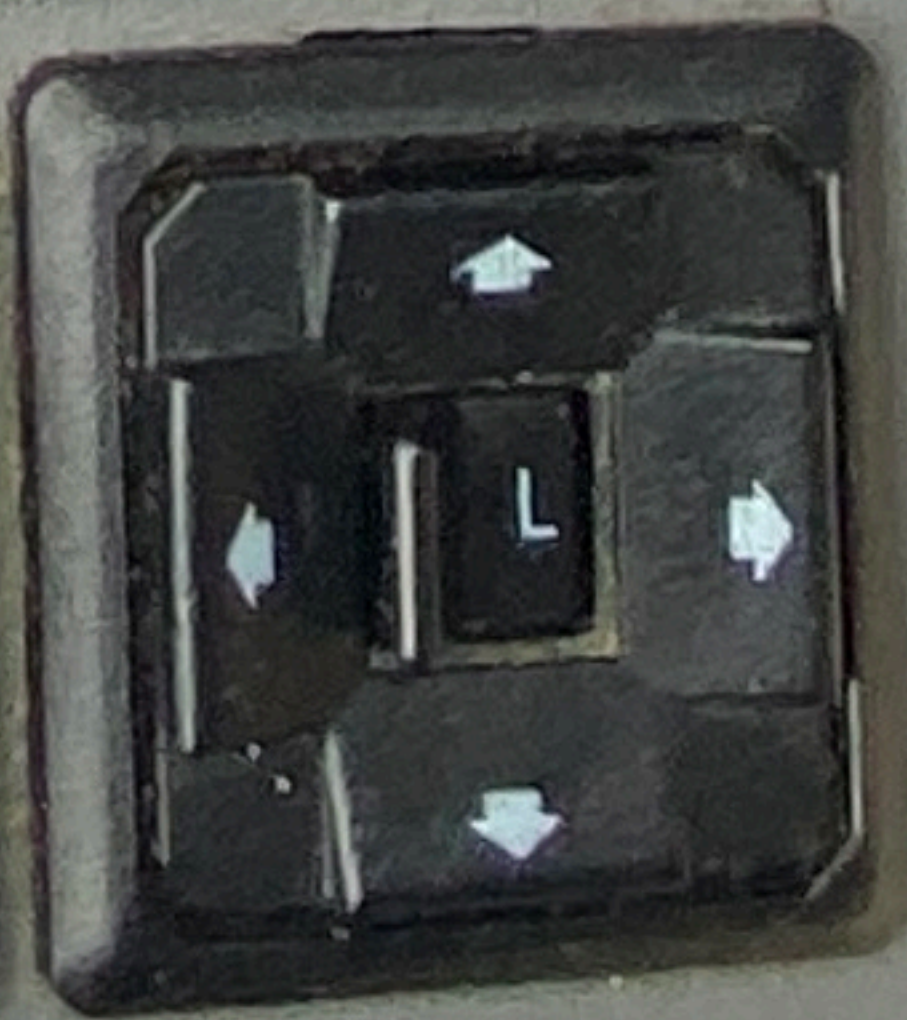
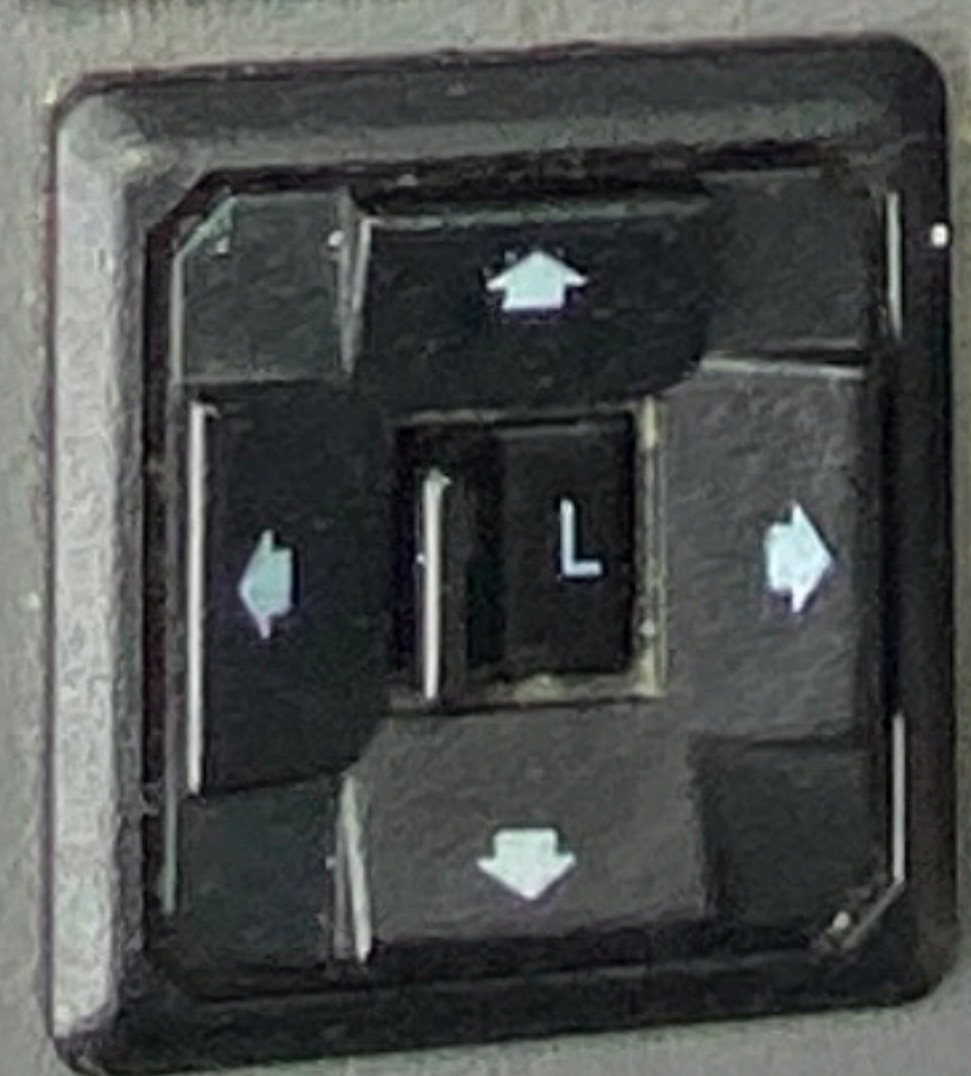




Transmission control panel featuring a digital display and various buttons.

Buttons: R, N, D, MODE, PERF, Up Arrow, Down Arrow.

Labels: Allison Transmission, 10M17MS, 201-1201.



TOPS REORDER NO. 17524

MADE IN USA









