



COMMONWEALTH OF VIRGINIA
STANDARD CONTRACT

Contract No. UCPJMU4427

This contract entered into this 21st day of July 2015 by Apex Companies, LLC hereinafter called the "Contractor" and Commonwealth of Virginia, James Madison University called the "Purchasing Agency".

WITNESSETH that the Contractor and the Purchasing Agency, in consideration of the mutual covenants, promises and agreements herein contained, agree as follows:


SCOPE OF CONTRACT: The Contractor shall provide the services to the Purchasing Agency as set forth in the Contract Documents.

PERIOD OF PERFORMANCE: From July 21, 2015 through July 20, 2016 with 4 one-year renewal options.

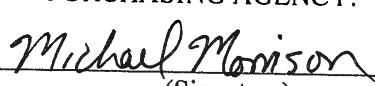
The contract documents shall consist of:

- (1) This signed form;
- (2) The following portions of the Request for Proposal MPM-840 dated January 8, 2015:
 - (a) The Statement of Needs,
 - (b) The General Terms and Conditions,
 - (c) The Special Terms and Conditions together with any negotiated modifications of those Special Conditions;
- (3) The Contractor's Proposal dated February 9, 2015 and the following negotiated modification to the Proposal, all of which documents are incorporated herein.
 - (a) Negotiations Summary, dated March 18, 2015.

IN WITNESS WHEREOF, the parties have caused this Contract to be duly executed intending to be bound thereby.

CONTRACTOR:
By: 
(Signature)

John Strecker
(Printed Name)

PURCHASING AGENCY:
By: 
(Signature)

Michael Morrison
(Printed Name)

Title: Vice President and Southeast Regional Mgr

Title: Buyer Specialist



**RFP # MPM-840, Stormwater Structures Maintenance
Negotiation Summary for Apex Companies, LLC
03/18/2015**

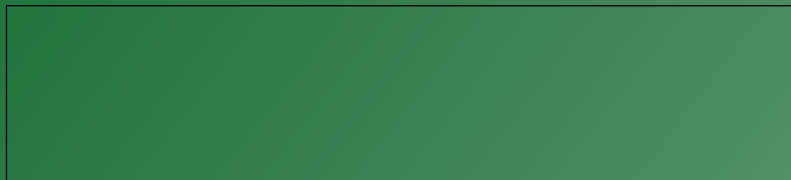
1. The Pressure Wash pricing provided is per unit (Stormceptor, etc.).
2. Is the vacuum truck service a VACTOR truck? Do you have VACTOR trucks available and what is the pricing, if different than that listed in your proposal?
 - a. **The price is for a VACTOR truck.**
3. Apex is very familiar with all the maintenance requirements for all Contech, Filterra, and similar products and have conducted countless number of maintenance events on all types of underground and aboveground BMPs. We are a certified preferred Contech maintenance provider.
4. All provided prices represent Apex's best and final offer.



RFP # MPM-840, Stormwater Structures Maintenance
Negotiation Summary for Apex Companies, LLC
03/18/2015

Services	Normal Working		Emergency hours
Principal	\$180.00	per hour	5PM-8AM Monday thru Friday, Weekends, Holidays
Certified Safety Professional/Sr. Project Manager	\$165.00	per hour	5PM-8AM Monday thru Friday, Weekends, Holidays
Environmental Engineer/ Professional Geologist	\$160.00	per hour	5PM-8AM Monday thru Friday, Weekends, Holidays
Project Manager	\$140.00	per hour	5PM-8AM Monday thru Friday, Weekends, Holidays
Equipment Manager	\$75.00	per hour	5PM-8AM Monday thru Friday, Weekends, Holidays
Responsible Land Disturber	\$115.00	per hour	5PM-8AM Monday thru Friday, Weekends, Holidays
Staff Geologist	\$75.00	per hour	5PM-8AM Monday thru Friday, Weekends, Holidays
Environmental Scientist	\$65.00	per hour	5PM-8AM Monday thru Friday, Weekends, Holidays
Draftsperson/ CADD Operator	\$70.00	per hour	5PM-8AM Monday thru Friday, Weekends, Holidays
Field Technician	\$65.00	per hour	5PM-8AM Monday thru Friday, Weekends, Holidays
Administrative/Documents Manager	\$55.00	per hour	5PM-8AM Monday thru Friday, Weekends, Holidays
Supervisor	\$105.00	per hour	5PM-8AM Monday thru Friday, Weekends, Holidays
Laborer	\$55.00	per hour	5PM-8AM Monday thru Friday, Weekends, Holidays
Vacuum Truck and operator services	\$200.00	per hour	Daily Mobilization Fee: \$200.00
Confined Space Entry cost per crew (#2 crew members)	\$175.00	per hour	Daily Mobilization Fee: \$150.00
Liquids Hauling Charge	\$0.30	per gallon	5PM-8AM Monday thru Friday, Weekends, Holidays
Solids Hauling Charge	\$1.75	per gallon	5PM-8AM Monday thru Friday, Weekends, Holidays
Pressure Wash Fee	\$75.00	per event	5PM-8AM Monday thru Friday, Weekends, Holidays
Equipment			
Trackhoe	\$1,200.00	per day	5PM-8AM Monday thru Friday, Weekends, Holidays
Mini Excavator	\$700.00	per day	5PM-8AM Monday thru Friday, Weekends, Holidays
Backhoe	\$400.00	per day	5PM-8AM Monday thru Friday, Weekends, Holidays
Skid Steer	\$350.00	per day	5PM-8AM Monday thru Friday, Weekends, Holidays
Single-axle dump	\$550.00	per day	5PM-8AM Monday thru Friday, Weekends, Holidays
Tandem Axle Dump Truck	\$700.00	per day	5PM-8AM Monday thru Friday, Weekends, Holidays
Service truck (4 hour minimum)	\$150.00	per day	5PM-8AM Monday thru Friday, Weekends, Holidays
CCTV Equipment with Trailer	\$1,500.00	per day	5PM-8AM Monday thru Friday, Weekends, Holidays
Dewatering Pump (6") and Hoses	\$450.00	per day	5PM-8AM Monday thru Friday, Weekends, Holidays
Chipper	\$525.00	per day	5PM-8AM Monday thru Friday, Weekends, Holidays
Other Direct Costs			
Provide and install replacement backfill	\$60.00	per ton	5PM-8AM Monday thru Friday, Weekends, Holidays
Class I Rip Rap	\$70.00	per ton	5PM-8AM Monday thru Friday, Weekends, Holidays
Clearing and Grubbing Crew	\$2,500.00	per day	5PM-8AM Monday thru Friday, Weekends, Holidays
Erosion Control Mat with Staples	\$105.00	per roll	5PM-8AM Monday thru Friday, Weekends, Holidays
Soil and water analysis (standard turnaround)			5PM-8AM Monday thru Friday, Weekends, Holidays
-Characterization	\$700.00	each	5PM-8AM Monday thru Friday, Weekends, Holidays
-Total petroleum hydrocarbon (TPH)	\$150.00	each	5PM-8AM Monday thru Friday, Weekends, Holidays
-Benzene, toluene, ethylbenzene, and xylenes (BTEX)	\$70.00	each	5PM-8AM Monday thru Friday, Weekends, Holidays

❖ Equipment rates include Mobilization and Demobilization costs but exclude operator.



Fe

H₂O



Request for Proposal Stormwater Structures Maintenance RFP #MPM-840



Due: February 10, 2015 Time: 2pm EST

Prepared for:

Commonwealth of Virginia
James Madison University
Procurement Services MSC 5720
752 Ott Street, Wine Price Building
First Floor, Suite 1023
Harrisonburg, VA 22807



Prepared by:

Apex Companies, LLC
8854 Rixlew Lane
Manassas, VA 20109

O₂



TABLE OF CONTENTS

Page

RFP V.B.1	RFP Cover Sheet and Addenda Acknowledgements	1
RFP V.B.2	Plan and Methodology	4
RFP IV.B.1	Approach and Ability	5
RFP IV.B.2	Firm's Qualifications, Capabilities, and Experiences	6
RFP IV.B.3	Organization Chart and Personnel Qualifications	8
RFP IV.B.4	Firm's Experience with Similar Services to Comparable Institutions	11
RFP IV.B.5	Statement Indicating OSHA Inspections by State and/or Federal Agencies	11
RFP IV.B.6	Information Regarding Contracts Not Renewed	11
RFP V.B.3	Firm's Qualifications and Personnel Resumes	18
RFP V.B.4	Offeror Data Sheet	31
RFP V.B.5	Small Business Subcontracting Plan	33
RFP V.B.6	Sales with VASCUPP Member Institutions.....	36
RFP V.B.7	Proposed Costs	37

RFP V.B.1 Return RFP Cover sheet and all addenda acknowledgments, if any, signed and filled out as required.

The signed cover sheet and is presented on the following page. Apex has also reviewed the Answers to the Questions and Clarifications dated 1/27/15. In addition, we have also provided a copy of our Contractor's Class A License as requested.

Request for Proposal

RFP # MPM-840

Issue Date: 1/8/2015

Title: Stormwater Structures Maintenance

Issuing Agency: Commonwealth of Virginia
James Madison University
Procurement Services MSC 5720
752 Ott Street, Wine Price Bldg.
First Floor, Suite 1023
Harrisonburg, VA 22807

Period of Performance: From Date of Award Through One Year (Renewable)

Questions/Clarifications will be received until 2:00 PM on Tuesday, January 20, 2015. All questions/clarifications shall be submitted on form provided within RFP.

Sealed Proposals Will Be Received Until 2:00 p.m. on Tuesday, February 10, 2015 For Furnishing The Services Described Herein.

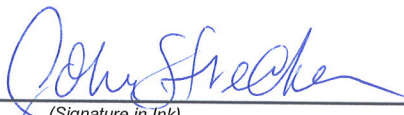
No Pre-Proposal Meeting is Scheduled

All Inquiries For Information and Clarification Should be directed: Michael Morrison, Buyer, Procurement Services, morrismp@jmu.edu 540/568-6181 (Fax) 540/568-7936.

NOTE: THE SIGNED PROPOSAL AND ALL ATTACHMENTS SHALL BE RETURNED

In compliance with this Proposal and to all the conditions imposed herein, the undersigned offers and agrees to furnish the goods/services in accordance with the attached signed proposal or as mutually agreed upon by subsequent negotiation.

Name and Address of Firm:
Apex Companies, LLC
8854 Rixlew Lane
Manassas, VA 20109
Date: February 9, 2015
Web Address: www.apexcoss.com
Email: jstrecker@apexcoss.com

By: 
(Signature in Ink)
Name: John Strecker
(Please Print)
Title: Vice President, Southeast Regional Mgr
Phone: 703-396-6730
Fax #: 703-396-6743

ACKNOWLEDGE RECEIPT OF ADDENDUM #1 _____ #2 _____ #3 _____ #4 _____ #5 _____ (please initial)

SMALL, WOMAN OR MINORITY OWNED BUSINESS:

YES; ☒ NO; IF YES ⇒⇒ SMALL; WOMAN; MINORITY IF MINORITY: AA; HA; AsA; NW

Note: This public body does not discriminate against faith-based organizations in accordance with the Code of Virginia, § 2.2-4343.1 or against a bidder or offeror because of race, religion, color, sex, national origin, age, disability, or any other basis prohibited by state law relating to discrimination in employment.

Apex holds a Virginia Class A Contractors License #2705 110243A. For your review, a copy of this license is below.

**DEPARTMENT OF PROFESSIONAL AND OCCUPATIONAL REGULATION
COMMONWEALTH OF VIRGINIA**

EXPIRES ON
10-31-2016

9960 Mayland Dr., Suite 400, Richmond, VA 23233
Telephone: (804) 367-8500

NUMBER
2705110243

BOARD FOR CONTRACTORS
CLASS A CONTRACTOR
CLASSIFICATIONS ENV H/H

APEX COMPANIES LLC
15850 CRABBS BRANCH WAY
SUITE 200
ROCKVILLE, MD 20855



Jeff W. DeBoer
Jeff W. DeBoer, Director

ALTERATION OF THIS DOCUMENT, USE AFTER EXPIRATION, OR USE BY PERSONS OR FIRMS OTHER THAN THOSE NAMED MAY RESULT IN CRIMINAL PROSECUTION UNDER THE CODE OF VIRGINIA.

(SEE REVERSE SIDE FOR NAME AND/OR ADDRESS CHANGE)

(POCKET CARD) **COMMONWEALTH OF VIRGINIA**
CLASS A BOARD FOR CONTRACTORS
CONTRACTOR

CLASSIFICATIONS ENV H/H
NUMBER: 2705110243 EXPIRES: 10-31-2016

APEX COMPANIES LLC
15850 CRABBS BRANCH WAY
SUITE 200
ROCKVILLE, MD 20855



(DETACH HERE)

DEPARTMENT OF PROFESSIONAL AND OCCUPATIONAL REGULATION
9960 Mayland Dr., Suite 400, Richmond, VA 23233

ALTERATION OF THIS DOCUMENT, USE AFTER EXPIRATION, OR USE BY PERSONS OR FIRMS OTHER THAN THOSE NAMED MAY RESULT IN CRIMINAL PROSECUTION UNDER THE CODE OF VIRGINIA.

The following pages will further demonstrate our capabilities and understanding of this contract. Our proposal has been formatted in line with the evaluation criteria of RFP #MPM-840.

RFP V.B.2 Plan and methodology for providing the goods/services as described in Section IV "Statement of Needs" of this Request for Proposal.

Apex Companies, LLC (Apex) is pleased to provide our response to James Madison University's (JMU) Solicitation for **Request For Proposal #MPM-840 titled Stormwater Structures Maintenance.**

Apex was founded in 1988 to provide high quality environmental, health and safety consulting, stormwater, and remediation services in a cost-effective manner for both private companies and government agencies. Headquartered in Rockville, Maryland, Apex has grown to more than 600 employees located in 45 full service branch offices, including three offices in Virginia (Manassas, Richmond, and Roanoke). In an increasingly competitive marketplace, the relationship and trust we build between our clients and ourselves is the major reason we continue to see return business.

We know James Madison University; we can hit the ground running without a learning curve. Apex has been supporting the academic community for over 20 years. We have performed environmental services for the majority of universities in the Washington, DC Metro Area. These services included asbestos consulting, MS4 Permitting, Professional Stormwater Services, Stormwater Maintenance, Stormwater repairs, Clean Air Act permitting, Environmental Impact Reviews (EIRs), water permitting, storage tank services, Phase I and II Environmental Site Assessments, remediation, Indoor Air Quality Investigations including Mold, and health and safety program developments. Furthermore, Apex has been an active participant in APPA: The Association of Higher Education Facilities Officers. Through the Association, Apex continues to gain valuable knowledge of the issues facing facilities management. Apex has performed services for James Madison University via Contract #07-08-04LV Memorial & Showker Hall – UST Removal and the previous Stormwater Structures Maintenance Contract #UCPJMU-3720. Apex has also employed JMU Alumni over the years who graduate with the knowledge and skills needed to work in the environmental field.

We have corporate experience and a recognized reputation in Virginia. Apex is well known for its professional and field-oriented consulting. It is a corporation that has grown by satisfying its clients with grade "A" service. This dedication to service starts with Peter Young, Apex's Founder and Chief Executive Officer, and extends through all professional and support staff.

We have the necessary local staff to perform all the required services. We have a Team of experienced engineers, stormwater professionals, geologists, scientists, industrial hygienists and asbestos professionals that have the education, credentials, certifications, and practical work experience at all levels necessary to perform the work in a timely and cost-effective manner.

Apex Highlights

- Founded in 1988
- Over 600 Employees; 45 Offices
- Headquartered in Rockville, MD
- Stormwater Maintenance
- BMP Inspections
- Stormwater Structure Repair & Rehabilitation
- Stormwater Compliance and Management
 - ♦ MS4 Program Support Services
 - ♦ Stormwater BMP Design
 - ♦ EPA Audit Support
 - ♦ Stormwater Monitoring & Sampling
 - ♦ Stream Restoration
 - ♦ Water Quality Monitoring
 - ♦ Flow Monitoring
 - ♦ Rainfall Monitoring
 - ♦ Automated Water Chemistry
 - ♦ Field Sampling
 - ♦ Reporting
 - ♦ Compliance Inspection
- Industrial Hygiene
- Remediation and Restoration
- Emergency Response
- Water Resources

RFP IV.B.1 Describe your approach and ability to provide excellent customer service throughout the term of the contract, to include mobilization of the contractor's management and work staff to meet the needs stated herein. Include how you will provide excellent customer service on fast turn-around projects to include mobilization of a crew if your firm is not in close proximity to the University.

The following is our approach for providing services as required by this RFP. Proposed services will include cleaning, maintenance, and repairs of campus stormwater structures and best management practices (BMPs). Some of these structures and BMPs include but not limited to are bioretention filters, sand filters, manufactured BMP systems, oil-water separators, underground vaults, piping, tanks and structures, surface impoundment areas, drop inlets, open drainage channels, streams, catch basins, manholes, outfalls, dry and wet ponds, pond control structures, etc.

Apex has over 75 professionals available to support any project that JMU may have. We have developed a streamlined structure that integrates management, technical, and facility resources for high quality and cost-effective contract performance. Central to this structure is a dynamic management organization that ensures controlled flexibility, encourages communications, and depends on a diversity of personnel capabilities. Our Project and Task Managers can effectively draw on staff and other corporate resources to meet rigorous schedule and task needs on fast turn-around projects. With three offices in Virginia (Manassas, Richmond, and Roanoke), Apex has the necessary staff and capabilities to mobilize crews to meet the needs of JMU.

We realize the potential demands of this project and commit to dedicating enough individuals to the project in all required disciplines. Apex possesses a wide range of diverse experience and certifications so that, not only can Apex provide replacements as needed, but also many individuals can assist in areas other than their designated assignment.

In cases of immediate response tasks, the planning efforts may be streamlined and accelerated. Increased direct involvement and oversight will be provided by technical experts and the Project Manager to compensate for less formal planning. Apex routinely performs multi-year, large scale, and task order programs for our municipal clients.

We have the necessary local staff to perform all the required services. Apex can provide all the anticipated services. We have experienced professional engineers, project and task managers, planners, geologists, scientists, and GIS specialists, Virginia Department of Environmental Quality (VDEQ) Erosion and Sediment Control professionals, and VDEQ Certified Stormwater Inspectors and Plan Reviewers that have the education, credentials, certifications, and practical work experience at all levels necessary to perform the work in a timely and cost effective manner. Our staff knows the local requirements and regulators and is readily accessible.

Apex has extensive experience with Municipal Separate Storm Sewer (MS4) and Virginia's Pollution Discharge Elimination System (VPDES) permits. We are experienced in supporting MS4 permit holders to comply with the requirements of emerging Chesapeake Bay Requirements. We have the design/build capabilities with in-house crews and equipment that have performed over 10,000 stormwater-related projects in the Mid-Atlantic region. We have the experience, resources and personnel to help manage the needs of JMU.

Other aspects of our ability to respond within quickly of initial contact include:

Constant Communication. All field personnel and managers are equipped with smart phones that allow for constant communication with other staff members and the client. These phone numbers can be provided for immediate contact with Apex should the need arise.

In-house Equipment Ready. We maintain a wide range of sampling instrumentation and PPE including PIDs, LELs, air quality meters, heat stress monitors, ISCO autosamplers, pH/temperature meters, chlorine meters, DO meters, conductivity meters, PIDs, digital cameras, confined space equipment, confined space entry rescue equipment, skid steer loader, trucks and trailers, infrared cameras, GPS receiver (Trimble), groundwater sampling pumps, data loggers, camera truck, respirators, etc. The Team maintains the latest in software capabilities, such as ESRI ARC GIS, AutoCAD, and MS Office.

Proven Response Capability. We have proven our ability to respond through various contracts with the City of Fairfax, Fairfax County, Arlington County Public Schools, Stafford County, Stafford County Public Schools, James Madison University, George Mason University, Virginia Western Community College, Prince William County, Prince William County Public Schools, Colonial Pipeline, George Mason University, Giant Food, and United Airlines.

Our approach and ability to provide excellent customer services is further demonstrated in Section RFP IV.B.3 of this proposal.

RFP IV.B.2 Fully describe the qualifications, capabilities, and experiences of your firm, in particular, providing stormwater structure maintenance, to include your firm's size and number of employees.

Apex is performing stormwater management system restoration and maintenance in over 45 states. Apex provides complete stormwater management support services. Specific elements are listed below.

Inspections: Apex in-house staff include **VDEQ Certified Stormwater Inspectors (CSIs), VDEQ Certified Erosion and Sediment Control Inspectors/Plan Reviewers, Certified OSHA Confined Space, and Responsible Land Disturbors** that perform the inspections and lead our inspection teams. Depending on the specific requirements of the client and stormwater facility type, we have established inspection programs for frequencies of monthly to annually. Apex has successfully conducted assessments on structural and non-structural BMPs providing detailed records of current and past conditions. Our inspectors review conditions of grit chambers, catch basins, wet ponds, dry ponds, sand filters, forebays, outfalls, embankments, trashracks, risers, and spillways and associated piping and structures to ensure proper operation.



Maintenance: Regular maintenance services are critical components of stormwater management. Regular maintenance results in decreased long-term operating costs, operation in accordance with design specifications, and regulatory compliance. Additionally, nuisance issues such as insect and animal infestation may be eliminated. Typical maintenance activities that Apex performs include:

- Confined Space Entry Inspection
- Filter Media and Cartridge Replacement

- Brush and tree removal
- Grading and slope stability
- Vegetation of denuded areas
- Vault, inlet, and piping cleaning
- Erosion control and inspection
- Catch basin cleaning
- Oil/water separator cleaning
- Mowing and debris removal
- Collection of GPS/GIS Data and Database Management

Structural BMP Routine Maintenance. BMP maintenance shall be in conformance and adherence with applicable manufacturer's requirements. BMP routine maintenance includes management oversight, Vactor truck, confined space entry crew, and proper disposal of removed waste/material. A typical maintenance crew consists of a foreman, one or more laborers, and a vactor truck operator depending on the size and location of the unit(s). The frequency may vary from after any major storm, to up to twice a year. In addition, sediment testing and access roads clearing (if present) will be conducted as necessary. Apex has been conducting annual BMP routine maintenance on BMPs which has been effective in maintaining the facilities in proper working order according to manufacturer's recommendations. All BMPs will be treated as confined space. Apex will use only current confined space entry trained personnel, appropriate safety/monitoring equipment and permits (as necessary) while conducting maintenance activities. In addition, many of the BMPs are located in close proximity or on the shoulder of main roadways and interstates requiring proper traffic safety/control equipment and procedures. Apex staff has completed training for basic work zone traffic control and is versed with the Virginia Work Area Protection Manual and its requirements.

Non-Structural BMP Routine Maintenance. Apex can perform routine maintenance on all aboveground non-structural BMPs within the listed inventory based on the assessments. Routine maintenance should be conducted on an annual basis and may include debris and litter removal, sediment removal, vegetation control to include woody vegetation removal, pesticide operations for invasive or noxious plant species, rodent control or mosquito control, re-vegetation of denuded areas in accordance with JMU. Routine maintenance will be conducted utilizing a combination of Apex maintenance personnel consisting of four laborers, two operators/foremen, three inspectors, and two subcontractors, all of which have extensive experience conducting the required maintenance activities on the existing SWBs/BMPs. All routine maintenance operations will be itemized in detail regarding the necessary resources with photographs documenting before and after conditions. All such documentation and a detailed report summarizing the completion of activities per SWB/BMP will be submitted to the County for each SWB/BMP undergoing routine maintenance as part of the updated database submitted as required in the contract document. Completion reports shall be compiled and submitted monthly and shall include those tasks completed during the previous month.

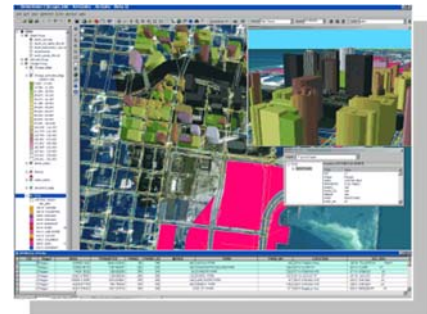
Database Management: A unique aspect to all the services that Apex provides is our in-house database management and software development. Apex is constantly looking for ways to automate our services and incorporate our deliverables into the client's existing database. Apex has completed stand-alone web-based systems, automated inspection checklists, SQL databases, Microsoft Access databases and Excel spreadsheets. Apex has designed and maintained databases for similar stormwater contracts. Apex can create and upkeep a database that will track all assessments conducted or we can simply update an existing database. Data that can be included in the database would consist of:

- Field inspection data will be collected by a team of qualified Apex personnel. **Attention to detail will be a primary concern while collection of assessment data is conducted.** Apex's trained professionals are currently performing this scope and no learning curves are

required. All aspects of the BMPs will be scrutinized to assure that each individual assessment parameter is rated properly in order to present an accurate, comprehensive snapshot of the relative condition of each facility.

- Photographic documentation will be conducted as part of the assessment to document visual evidence of the general condition of each BMP. Locations of photo reference points will be noted for utilization in future inspections. The photographs will be provided in JPEG format as an electronic attachment to each completed inspection report form during each inspection event. Electronic photographs will be assigned file names to match the corresponding feature within the BMP.
- Additional comments will be noted on the assessment form by Apex to note specific site conditions or information as deemed necessary to further characterize the condition of the SWB/BMP. Support data will include detailed physical information on the BMP and size and inventory information on the structures within a BMP.
- Upon completion of the field inspections, Apex will maintain an accurate database including the data generated from the activities discussed above to include inspection data, GPS data, and photographic data. Compiled inspection data and GPS data will be submitted as required.

Geographic Information Systems (GIS): Our Team can provide GIS support to both government and the private sector. By using the most current software available we have the ability to design, develop, construct, and append geodatabases to the specific needs of JMU. We further understand our specific clients' needs and have seasoned database professionals developing GIS that can be used for decision making, site selection, natural resource planning, capital outlay, regulatory analysis, and compliance. Our field personnel are professionally trained in and routinely use Trimble GPS collection, instrumentation, and differential data correction.

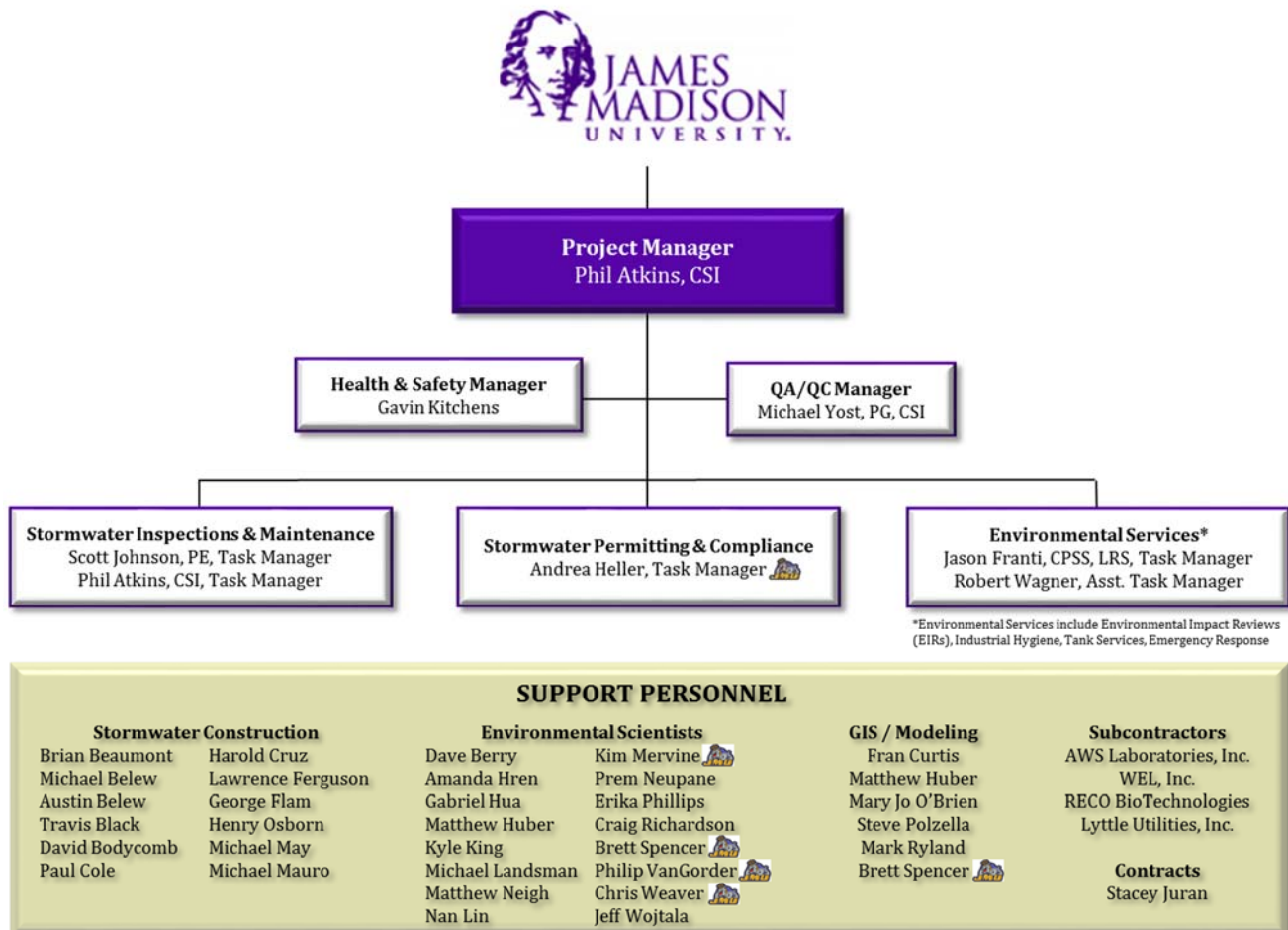


The BMP locations will be located by GPS to support their mapping in GIS models. Apex will gather the GPS data at each BMP (location, reference points, and outline or polygon points). The Trimble DGPS system utilizes satellite navigation technology to precisely (within approximately one meter accuracy) identify location in near-real-time (readings are collected approximately once per second). The Trimble DGPS with the Pathfinder Office differential correction software is a dual frequency system that can provide effective accuracy under the conditions anticipated at the Site under investigation. The DGPS instrumentation is operated in a manner consistent with the general procedures documented in their respective operational manuals. DGPS functional checks include occupation of known control points, as well as the reacquisition of specific targets or above-ground features generated from the interpretation of the geophysical data. If requested, Apex can utilize DGPS instrumentation with additional precision and accuracy. Apex will use ARCGIS to provide mapping, analysis, and deliverable format.

RFP IV.B.3 Provide an organizational chart indicating which individuals or positions have knowledge of a contract with the University and the degree which each person would be responsible to the University account Include names of project managers and supervisors.

We have organized our project team based on our experience in successfully performing previous similar contracts and the specific requirements outlined by the RFP announcement. The Project Manager is directly accountable and can draw on the total resources of the firm, as required to meet the needs of JMU. Full resumes are included in section RFP V.B.3 of key staff.

The following project organization focuses on clear lines of communication for the directing and coordination of project activities. Levels of authority are equal, with Apex assuming 100% of the responsibility for the project completion.



Key staff and their responsibilities in supporting JMU are described below.

Project Manager and Stormwater Inspections & Maintenance Task Manager. Apex has designated **Mr. Phil Atkins**, as the Project Manager and one of the **Stormwater Inspections & Maintenance Task Manager** for this contract. Mr. Atkins has performed work for James Madison University and well versed in their protocols. The Project Manager will remain in close communication with the designated JMU representative and will supervise all Task Managers to ensure that Apex meets or exceeds contract-specific requirements. Mr. Atkins has over 20 years of experience in the stormwater and environmental arena. He will have the sole responsibility for all work performed under the contract. He will:

- Maintain and manage procedures for receiving and executing delivery orders;
- Monitor and report on all technical and financial performance;
- Ensure technical quality and continuity, as well as serve as principal contact with JMU;
- Manage resource capacity and availability, utilizing regular staff meetings, and conduct monthly project reviews; and
- Authority to obtain all the necessary resources under this contract.

Health and Safety (H&S) Manager. As the H&S Manager, **Mr. Gavin Kitchens** will review the requirements for health, safety, and emergency preparedness, and implement Apex's Health & Safety Plan for the contract. He will have the authority to stop site work activities and ensure timely corrective action is taken to eliminate health and safety deficiencies. He will:

- Develop Site Health & Safety Plans (SHSPs) and approve subcontractor SSHPs;
- Provide management support;
- Coordinate and conduct training, coordinate medical information for on-site personnel, and audit compliance with safety and health procedures at the job sites; and
- Monitor compliance with all applicable state, federal, and local safety and health codes, standards, and regulations (e.g., OSHA 29 CFR 1910.120).

Quality Assurance / Quality Control (QA/QC) Manager. Apex has chosen **Mr. Michael Yost, PG, CSI**, who will have overall responsibility to establish and implement the QC program for the contract. Mr. Yost currently directs Apex's National Stormwater Program overseeing stormwater services in our offices across the Country and is an Apex Principal. He will function with necessary independence from the project management team to ensure objectivity. Mr. Yost will provide guidance and conduct independent monitoring and audits of project work, to assure that quality work products are delivered in accordance with the established JMU requirements, procedures, and quality criteria. The QC Supervisor is authorized to stop work activities and direct corrective actions when QC deficiencies are identified.

Stormwater Inspections and Maintenance Task Manager. Apex has chosen **Mr. Scott Johnson, PE**, to manage and coordinate stormwater inspection and maintenance activities for JMU. Mr. Johnson has been managing database development, maintenance, and repair of various stormwater structures in the Mid-Atlantic Region. He currently manages multiple crews providing these services for municipal and commercial clients in the area. He is also the Project Manager for stormwater management inspections, maintenance, and repairs for government and commercial clients. He has over 25 years of experience in environmental construction and has been managing stormwater services out of the Manassas office for last seven years.

Stormwater Permitting and Compliance Task Manager. Apex has chosen **Ms. Andrea Heller**, to manage and coordinate stormwater permitting activities for JMU. Ms. Heller currently manages these services for municipal and commercial clients in the area. She is the Project Manager for permitting and compliance activities at Virginia Western Community College, Prince William County Schools, Stafford County Schools, and DC Department of the Environment. She has over 11 years of experience in environmental arena and has been managing stormwater services out of the Manassas office for last four years and is a **JMU Alumni**.

Environmental Services Task Manager. Apex has chosen **Mr. Jason Franti, CPSS, LRS** who brings over 15 years of experience in due diligence, corrective action, site investigation, environmental compliance, and NEPA support. Mr. Franti has been Apex's lead on EIR preparations and submittals for various projects throughout the Commonwealth, especially with George Mason University projects. Mr. Franti has led efforts to address a surplus of environmental issues related to Mason development projects including: wetlands delineation, mitigation, and impact permitting, threatened and endangered species, cultural resources, resource protection areas (RPAs), stormwater runoff, hazardous materials, and EIR suspension avoidance. Mr. Franti's relationships with various state agency personnel have allowed EIR projects to maintain schedules. Mr. Franti has an extensive background in Soil Science in which he has conducted a diverse range of activities including classification, sampling, wetland delineation, and laboratory analyses.

Environmental Services Task Manager. Apex has chosen **Mr. Robert Wagner** who brings over 15 years of experience in environmental management, due diligence, site investigation, and corrective action. Mr. Wagner's experience includes stormwater management, environmental site assessments, site characterization, corrective action, pollution prevention, and solid and hazardous waste management.

RFP IV.B.4 Describe the experience your firm has with provisions of similar services to comparable institutions. These may be term contracts or spot purchases.

Apex is a national player in the area of stormwater management system restoration and maintenance. Stormwater has become an extremely important part of the land development process, especially in the mid-Atlantic region with serious watershed issues. Apex provides comprehensive stormwater management services including: inspections, permitting, construction, repair/rehabilitation, and maintenance. Local clients that we have provided these services include:

- JMU
- VDOT
- Fairfax County
- Loudoun County
- City of Fairfax
- Prince William County
- Prince William County Public Schools
- Stafford County Public Schools
- Arlington County Public Schools
- United States Postal Service
- City of Rockville
- Montgomery County
- Wal-Mart
- Various Private Developers
- Virginia Western Community College

Relevant project descriptions to the services that we offer are at the end of this section.

RFP IV.B.5 Provide a statement that indicates whether your firm has been subject to OSHA inspections by State and/or Federal agencies and the results, including citations, if any.

Apex has not been subject of OSHA inspections by any state or federal agency.

RFP IV.B.6 Provide information regarding any contract that an institution, agency, or company that chose not to renew with your firm in the last five years, including the reason the contract was not renewed.

Apex has not had any clients chose not to renew our contracts.

PROJECT: Stormwater Management
LOCATION: Harrisonburg, VA
TIME: 2010 – present

Contracted to assist James Madison University (JMU) in stormwater best management practices (BMPs) that require inspection and maintenance.

These BMPs will typically require at a minimum annual inspection to ensure proper working order and compliance with applicable local and state regulations. Observation made during annual inspections may warrant the need for maintenance to remove accumulated sediment and debris to continue proper function of the systems

Three Stormceptor units, models STC 1800, STC 2400 and STC 900 were conducted April 9, 2014. Maintenance included the use of a vactor/jet truck and confined space entry crew to remove accumulated sediment and debris from the Stormceptor units and cleaning of the interior of the system with pressurized water and inspection of the unit.



Two Stormceptor units, models MC007 (STC 450i) and MC008 (STC 900) were conducted on July 16, 2014. Maintenance included the use of a vactor/jet truck and confined space entry crew to remove sediment and debris from the two Stormceptor units and associated structures. Apex removed and disposed of all sediment and debris collected at an approved offsite facility. Both units contained a significant amount of debris and required extensive cleaning to remove a combined 9 tons of sediment rock, gravel and mud.

Upon completion of all maintenance activities, Apex provided JMU with a report including photographs and recommendations for additional maintenance or repairs as necessary.

PROJECT:	Turnkey Stormwater Management
LOCATION:	Northern Virginia District (Fairfax, Loudoun, Prince William Counties)
TIME:	2010 – present

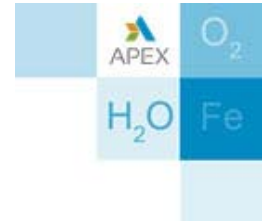
Apex is currently contracted by VDOT to provide turnkey management services for approximately 400 stormwater management basins and 36 underground BMPs in Loudoun, Fairfax, Arlington and Prince William Counties. The scope of work includes:

- Annual SWB/BMP inspections conducted by trained and certified stormwater inspectors. Based on the qualitative evaluation of the individual assessment parameters, an Overall Rating is established for each SWB/BMP. Apex then establishes a VDOT Maintenance Priority Rating based on the individual parameters and Overall Rating to establish a priority value for performing maintenance. Upon completion of the field inspections, Apex updates the VDOT database including the data generated from the inspection activities, GPS and photographic data.
- Routine maintenance of all VDOT owned/operated SWBs/BMPs. Annual BMP routine maintenance includes management oversight, removal of accumulated sediment and debris using a vactor truck and confined space entry crew and proper disposal of any waste/material. Routine maintenance of SWBs are conducted on an annual basis and include debris and litter removal, sediment removal and disposal onsite, vegetation control to include herbaceous and woody vegetation removal, pesticide operations for invasive or noxious plant species, rodent control or mosquito control, re-vegetation of denuded areas in accordance with VDOT requirements. All routine maintenance operations are itemized in detail regarding the necessary resources with photographs documenting before and after conditions. All such documentation and a detailed report summarizing the completion of activities per SWB/BMP are submitted to VDOT for each SWB/BMP undergoing routine maintenance as part of the database updated and submitted monthly.
- Minor and major repairs of SWBs are conducted as deemed necessary as required by VDOT based on SWB inspection findings and ratings. Repairs include such activities as dewatering operations, grading, excavation of accumulated sediment, disposal operations of sediment including contaminated sediments off-site at approved facilities, scour repair, riprap replacement/refurbishment, major repairs including pond structure replacement and retrofit operations (embankment, riser structure and spillway barrels, etc.). All repairs, retrofits, or restorations are completed by Apex's in-house construction crews and documented with detailed reports including before and after photographs and updated status entered into the VDOT database.
- Upon notification of VDOT of additional facilities being added to the program, Apex enters new inventory data into the database, conducts initial GIS Mapping of the new facility, an annual assessment and routine maintenance in a timely manner.





Virginia Western Community College (VWCC)



PROJECT:	MS4 Phase II Management
LOCATION:	Roanoke, VA
TIME:	2008 – present

Apex reviewed the original Virginia Water Protection (VWP) application sent to the Department of Environmental Quality (VDEQ) (DCR has since assumed responsibilities for the program) and determined the progress of the listed Best Management Practices (BMP's). Apex provided a report detailing the progress in each area and the sections of the BMP's in need of additional support or modifications. This report was prepared for submission to the DCR.



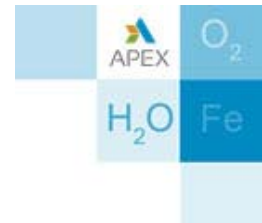
Apex is currently assisting Virginia Western Community College (VWCC) in permit compliance related to stormwater resources management. The Virginia Stormwater Management Program (VSMP) is mandated under the EPA Clean Water Act Phase II Municipal Separate Storm Sewer (MS4) Program. The federal permitting requirements have been incorporated into the permit regulations in Section 4 VAC50-60-380 and 390. Apex is currently working with VWCC through next Permit Application.

Apex is currently providing assistance in management of the following BMPs: Public Education and Outreach; Public Participation Efforts; Illicit Discharge Detection and Elimination; Construction Runoff Control Program; Post-Construction Runoff Control Program; and Good Housekeeping and Pollution Prevention. Apex completes VWCC's Annual Report which has included analyzing sampling results from outfalls. Each Annual Report is written and compiled by Apex who also submits these reports to VWCC and VDEQ. Apex has also completed an MS4 Program Plan that contains information on all the BMPs listed above. This Program Plan includes information on the outfalls and other BMPs located on VWCC campus with inspection procedures such as IDDE, Dry Weather Field Screening, Construction Inspection Procedures, etc.

Apex worked with VWCC to explore current options to identify local organizations to assist with a storm drain labeling program which has been completed on and surrounding properties. Apex teamed with VWCC and the Clean Valley Council to develop watershed management seminars. Apex reviewed VWCC's current plans detailing the outfalls and structural components with a map that identifies all outfalls which will be utilized in creating a geodatabase. Two waterways the MS4 discharges into are Ore Branch and Murray Run, and these are areas that may be of concern with future TMDL progress. An assessment of VWCC's Stormwater structures has been performed to determine the presence of illicit discharges and illegal dumping. Apex will continue inspections on an annual basis and assist in developing procedures and policies to detect and address illicit discharges and illegal dumping.



Stafford County Public Schools (SCPS)



PROJECT:	MS4 Phase II Stormwater Management Program
LOCATION:	Stafford County, VA
TIME:	2006 – present

Apex is contracted to assist Stafford County Public Schools (SCPS) in the implementation of a Stormwater Management (SWM) Program. The process was designed to reduce the discharge of pollutants from the MS4 to the maximum extent practicable (MEP), to protect water quality, and to satisfy the appropriate water quality requirements of the Clean Water Act and the State Water Control Law.

Apex reviewed the existing program and prepared a report summarizing the status of the SCPS SWM Program which was used to communicate proposed changes to the current SWM Program and summarizes activities planned for the next reporting cycle (the final report of the current permit cycle).



The SWM Program is in the form of six minimum control measures known as Best Management Practices (BMP's) as required by the VPDES General Permit for Stormwater Discharges from Small Municipal Separate Storm Sewer Systems. These BMPs are Public Education and Outreach on Stormwater Impacts; Public Involvement/Participation; Illicit Discharge Detection and Elimination; Construction Site Stormwater Runoff Control; Post-Construction Stormwater Management in New Development and Redevelopment; and Pollution Prevention/Good Housekeeping for Municipal Operations. These key BMPs were included in the Annual Report and MS4 Program Plan that Apex has completed and submitted to SCPS and VDEQ. The Program Plan includes information tables of all SCPS's stormwater basins, outfalls, bioretention, other BMPs, and procedures for IDDE inspections, Dry Weather Screening, Construction Inspection Procedures, etc. Apex is currently assisting SCPS with their recent EPA Audit by providing response assistance and answers.

Working with the Science Coordinator, SCPS integrate their public involvement and participation by incorporating classroom and extracurricular assignments and activities with the Standards of Learning Curriculum Framework. Educators are provided specific examples of unit activities and coursework to meet the requirements of the specific BMP. Selected schools have coordinated with local chapters of the Boy Scouts of America to label specific drains.

Apex reviewed and modified portions of the existing Stafford County Ordinance on illicit discharges to satisfy the requirement of the existing requirements for SCPS. A Trimble GPS unit was utilized to locate the structural BMPs, their outfalls, and the surface waters they discharge into. Once the data was collected, a geodatabase was created. Stormwater inspections for all BMPs and outfalls were completed and submitted to SCPS as a report. Inspections give SCPS a list of BMPs that require repairs and maintenance. Apex has conducted repairs of stormwater BMPs at some of the high schools.

Apex assists SCPS with a review maintenance contracts on all new construction. Contracts are required to maintain all vegetation and remove excess silt and debris at the request of SCPS for an agreed upon time period. Stafford County assumes maintenance responsibilities with the expiration of the warranty. Apex assists SCPS with prioritizing BMP maintenance and budget estimates.

PROJECT:	MS4 Phase II, BMP Maintenance and Repairs
LOCATION:	Prince William County, VA
TIME:	2006 – present

Apex assists PWCS in the reporting and compliance related to stormwater resources management by the Virginia Stormwater Management Program (VSMP) as mandated under the EPA Clean Water Act Phase II Municipal Separate Storm Sewer (MS4) Program.

Apex conducts yearly conditional assessments of the stormwater basins (SWBs) and associated structures (drop inlets/curb inlets/yard inlets, etc.) present at 55 separate PWCS properties. Properties include administration buildings, transportation facilities, as well as elementary, middle, and high schools. Apex completes an inspection form for each location that includes an inventory and condition assessment of all stormwater facilities and associated structures and a site sketch. Also included is a photographic log of each PWCS location assessed.



Apex also notifies PWCS with SWB facilities that require maintenance and/or repairs, price estimates for repairs, and brief description of maintenance and repairs required. These facilities are included in the inspections report that is done annually for PWCS. When assessed, the facilities are given a grade depending on the condition each are in and are included in the notification to PWCS for maintenance and repairs.

Apex also assisted PWCS with their MS4 Annual Report and their most recent permit renewal application. With the most recent permit, Apex has supported PWCS in completing the new requirements of this permit. Apex compiled the report with the necessary information and documents which was submitted to PWCS and VDEQ for review. Apex is currently in the process of assisting PWCS with the Year 2 Annual Report and providing this year's requirements according to the General Permit.

The required BMPs included in the permit are Public Education and Outreach on Stormwater Impacts, Public Involvement/Participation, Illicit Discharge Detection and Elimination, Construction Site Stormwater Runoff Control, Post-Construction Stormwater Management in New Development and Redevelopment, and Pollution Prevention/Good Housekeeping for Municipal Operations. These BMPs have been included in the MS4 Program Plan that has been completed by Apex. The Program Plan includes information on the outfalls and stormwater facilities on PWCS properties and the information on where each property discharges. Standard Operating Procedures (SOPs) have been included which detail procedures for IDDE and Dry Weather Field Screening. The Program has been submitted to PWCS and VDEQ for review.

Apex is currently supporting PWCS in writing their Chesapeake Bay TMDL Action Plan which is required in Year 2 of the General Permit. This plan considers the effect that the BMPs have on discharging pollutants into the Chesapeake Bay Watershed. Apex will be monitoring the BMPs already in place and analyzing them for their effectiveness of reducing or eliminating pollutants of concern. Apex will be assisting PWCS on BMPs that will be the most effective in reducing and eliminating pollutants and provide cost estimates on the installation of these BMPs.



Wal-Mart Stores, Inc.



PROJECT: Stormwater Management Program
LOCATION: Nationwide
TIME: 2002 – present

Completed over 25,000 Stormwater system inspections and evaluations since 2002 and for Wal-Mart, Sam's Club, Sam's Gas, Tire Lube Express, Distribution, and Fleet Services/Transportation. Services include permitting, plan research, data collection, database management, emergency response, training, consulting, construction, operation, and maintenance. Documented compliance with local, state, and federal regulations is a cornerstone of the project work. Long-term benefits include properly functioning systems, improved aesthetics, minimizing animal and insect populations, and decreasing long-term maintenance costs. Design/retrofit services incorporate the best available technology to enhance system performance and construction of a long-standing unit that requires minimal maintenance. Close coordination, communication, and approval with local community and municipalities.



Geographic Coverage. Work spans from Alaska to Maine and south to Florida. Currently executing work in 31 states and performing regular (monthly, quarterly, etc.) services at over 1,000 facilities in 26 states. All projects are maintained and updated using an Apex created database which includes all inspection, maintenance, repair, survey, and GIS data.

Monthly Stormwater System Compliance Inspections. Performs inspection of the stormwater systems located on site at various Wal-Mart and Sam's Club Stores across the U.S. Tasks include visual inspections of the stormwater retention/detention pond(s), stormwater swale(s) and ditch(s), catch basins, roof drains, grit separators, vaults, Vortech units, and other engineered BMPs. Oversees the monthly maintenance such as mowing, trash removal, catch basin cleaning, and cleaning of engineered BMPs. Field Inspectors verify quality assurance/quality control each stormwater system for sediment erosion, collapsed pipes, damaged headwalls, and any other component of the stormwater system to ensure it is functioning properly. Data is collected on portable computer tablets that upload the data to the web based management system database. These inspections require that each field tech is knowledgeable of current stormwater regulations that apply to each individual town.

System Repair/Rehabilitation. Completed numerous repairs for Wal-Mart ranging from simple repairs to complete rehabilitation of the stormwater system. Also re-engineered stormwater systems that were not functioning. Performed a variety of services, from the more typical engineering, construction, permitting, release response, and maintenance, to the unusual such as supplying emergency diesel fuel to stores that have lost power during a hurricane, to removing ice from loading docks and parking areas so customers and vendors can access facilities. Listed below is a summary of the recurring services we provide:

- Stormwater/Wastewater
- Storage Tanks
- General Construction
- Solid/Hazardous Waste
- Rapid & Emergency Response
- Permitting
- Engineering

RFP V.B.3 A written narrative statement to include, but not limited to the expertise, qualifications, and experience of the firm and resumes of specific personnel to be assigned to perform the work.

Apex recognizes that our overwhelming strength is in our people. Apex recognizes that its goal of providing a top quality product on time and within budget is achievable requiring the right talent, dedication, and knowledge of federal, state, and local requirements and practices. Apex's success is attributed to a staff of highly qualified and committed professionals and support personnel. Staff disciplines include environmental and civil engineering, planning, industrial hygiene, hazardous material identification and monitoring, environmental sciences, geology and hydrogeology, natural and physical sciences, and historic and archeological investigations. These scientists are all degreed professionals, many with master degrees, or professional certifications. Furthermore, Apex provides career development programs for its staff and encourages participation in professional societies, associations, and activities. Apex requires that its staff stay abreast of current practices, regulations, and techniques to allow delivery of state-of-the-art services of the highest caliber.

Following, you will find the resumes of our proposed management team for this contract.

EDUCATION

B.A., Environmental Studies,
State University of New York at
Buffalo, 1987

CERTIFICATIONS

VA DEQ Stormwater
Management Inspector

OSHA Confined Space Training

Responsible Land Disturber

YEARS WITH APEX: 13

YEARS OF EXPERIENCE: 21

Phil Atkins, CSI *Project Manager*

Mr. Atkins has over 20 years' experience in the environmental consulting industry including extensive experience in stormwater BMP management/assessment, designing and performing hydrogeologic site assessments including monitoring well installations, direct push evaluation, split-spoon sampling, geophysical surveys and groundwater monitoring and sampling and stormwater compliance and maintenance. Mr. Atkins currently is managing a contract for VDOT's Northern Virginia (NOVA) District for stormwater basin assessment and management services including the inspection, database management, maintenance and repairs for all VDOT-owned basins and BMPs in four counties. Mr. Atkins also manages projects for various municipal, private and commercial property owners conducting assessment and maintenance of underground and above ground stormwater facilities to assure compliance with applicable local and federal regulations. He also has experience in remediation system installation, operation, and monitoring at an EPA Superfund site. He has extensive experience in remediation investigations, system installations, operation, maintenance, and monitoring for petroleum retail facilities, utility companies, industrial/manufacturing plants, insurance companies, real estate and property management companies and various government agencies in Maryland, Virginia, Washington DC, New York and Pennsylvania.

PROJECT EXPERIENCE

- Campus Stormwater Structure Maintenance, James Madison University, VA
- Turnkey Stormwater Management and Maintenance, Virginia Department of Transportation, Northern VA
- Stormwater BMP Maintenance, Arlington County Public Schools, VA
- Stormwater Facility Assessment and Reporting, Various National Commercial Clients
- Annual Contract for Stormwater and Flood Proofing Improvements, Fairfax County, VA
- Underground and Aboveground Maintenance and Repairs of Stormwater Facilities, Various Municipal and Private Sector Clients, VA and MD
- RCRA Facility Investigation and Permit Negotiations, Continental Teves, Culpeper, VA
- Site Characterization and Corrective Action Implementation for Pipeline Release Site, Colonial Pipeline Company, Nokesville, VA
- Environmental Assessments and VRP Characterization, First Washington Realty/Regency Centers, Various Sites, VA

EDUCATION

M.S., Environmental Management, University of Maryland – University College, 2011

B.S., Geological Sciences, Wright State University, 2000

CERTIFICATIONS

Professional Geologist, NH

Certified Hazardous Materials Manager (CHMM)

Asbestos Inspector / Management Planner

Lead Paint Risk Assessor

OSHA Hazardous Waste Operations and Emergency Response Supervisor

OSHA Confined Space Training

MD Erosion & Sediment Control Green Card

YEARS WITH APEX: 1

YEARS OF EXPERIENCE: 12

Gavin Kitchens, PG, CHMM *Health & Safety Manager*

Mr. Kitchens has over 12 years' experience in the earth sciences and related disciplines. This experience encompasses geo-environmental investigation and remediation; civil, geotechnical, and structural engineering applications; hazardous materials management; health & safety; and construction. His primary role has been the Site Health & Safety Manager on small to moderate-scale environmental investigations and remediation projects under various structures (e.g., CERCLA, TSCA, UST, due diligence). This experience includes stormwater, Phase I/II Environmental Site Assessments (ESAs), Underground Storage Tank (UST) closure, contaminated soil excavation, hazardous materials surveys, and remedial investigations.

PROJECT EXPERIENCE

- Phase I ESAs, Washington Metropolitan Area Transit Authority, MD
- Groundwater Monitoring and Site Characterization for a Focused Feasibility Study, Former Fort Ritchie Army Garrison, MD
- Pentagon Mall Terrace Geotechnical Investigations, Arlington, VA
- Hazardous Materials Survey, White House Visitor's Entrance Complex, Washington, DC
- Hazardous Materials Survey, D.C. Water and Sewer Authority, DC
- PCB-Contaminated Stream Investigation, Forest Glen Annex, MD
- Leaking UST Investigation, Forest Glen Annex, MD
- Remedial Investigation, Forest Glen Annex, MD
- Geotechnical Quality Control, FBI Biometrics Technology Center, WV
- UST Closure and Installation, US Department of State, Nassau, Bahamas
- SPCC Plan Updates, Washington Suburban Sanitary Commission, MD
- New Embassy Compound Phase II ESA and Hazardous Materials Survey, US Department of State, Baku, Azerbaijan
- Monitoring Well Construction & Abandonment, Lipari Landfill, NJ
- Self-Implementing Cleanup of PCB-Contaminated Soil, Walter Reed Army Medical Center, DC
- Phase I & II ESAs and Hazardous Material Surveys, Howard County Bureau of Environmental Services, MD
- CERCLA Removal Actions, Beltsville Agricultural Research Center, MD
- Soil Vapor Extraction System Installation, Fort Belvoir, VA
- Landfill Delineation, Glenn Dale Plant Introduction Station, MD
- Phase I & II ESAs, Proposed Nationals Stadium, DC
- Snow Hill Lane Voluntary Cleanup Program Investigations, MD
- Heavy Equipment Operator, Maryland Air National Guard, MD

EDUCATION

B.S., Geology, Millersville
University of Pennsylvania, 1985

CERTIFICATIONS

Professional Geologist, PA

OSHA Hazardous Waste
Operations and Emergency
Response

OSHA Hazardous Waste
Operations and Emergency
Response Supervisor

OSHA Confined Space Training

USEPA Watershed Management
Certified

Maryland Sediment and Erosion
Control Certified

YEARS WITH APEX: 12

YEARS OF EXPERIENCE: 28

Michael Yost, PG

Quality Assurance / Quality Control Manager

Mr. Yost has over 28 years' experience in environmental consulting. He has managed all aspects of full service environmental consulting projects. His clients include both government agencies and private companies. Mr. Yost is a senior manager who has the appropriate education, national experience, credentials, and corporate authority to provide senior-level quality control review and support for this program. Mr. Yost has managed a variety of projects involving investigation and remediation of contaminated sites, negotiation with regulatory agencies, stormwater monitoring and analysis, stormwater compliance, inspections, SWPPP, maintenance, repair and redesign. Other projects have involved well installation, test pits, stream flow analysis, multi-media sampling and pump tests for aquifer characterization. His areas of specialization include MS4 Program Support, environmental sampling, stormwater system assessment and repair, and geotechnical studies. Mr. Yost currently directs the National Stormwater Program and will serve as the QA/QC Manager for this contract.

PROJECT EXPERIENCE

- Stormwater Inspections for Multi-State Retail Portfolio, Confidential Shopping Center, Nationwide
- Stormwater Ponds and Flood Proofing Improvements, Fairfax County, VA
- Stormwater Inspection and Maintenance, Safeway, Mid-Atlantic Region
- Pond Dredging, Greenspring Garden Park, Fairfax County Park Authority, VA
- Maintenance, Repair & Stabilization of Stormwater Drainage Facilities, Harford County, MD
- Stormwater System Inspection and Rehabilitation, Washington Metropolitan Area Transit Authority
- Stormwater System Rehabilitation, Loudoun County, VA
- Stormwater System Inspection and Maintenance, Fairfax County Storm Water Services, Fairfax County, VA
- Stormwater System Inspection and Repair, City of Falls Church, VA
- Stormwater System Inspection and Maintenance, Various Clients, Mid-Atlantic Region
- Water Street Sewer Evaluation & Repair, Lincoln Property Company, Washington DC
- Stormwater System Management, Private Retailer, Eastern US
- Stormwater Management, United States Postal Service, Washington DC
- Stormwater Maintenance, Repairs and Retrofit, Baltimore County, MD
- Stormwater Inspections, Access Midstream

EDUCATION

B.S., Civil Engineering,
University of South Carolina,
1988

CERTIFICATIONS

Professional Engineer Virginia

VA DCR Certified Combined
Administrator

OSHA Hazardous Waste
Operations and Emergency
Response

OSHA Confined Space

Waste Geotechnics – Applying
the Earth Sciences to Solve
Waste Disposal Problems
(Certificate)

DNAPL Site Diagnosis and
Remediation

YEARS WITH APEX: 7

YEARS OF EXPERIENCE: 25

Scott Johnson, PE

Stormwater Inspections and Maintenance Task Manager

Mr. Johnson has over 25 years' experience in civil/environmental engineering, erosion and sediment control plan development and inspection, stormwater management, wet utility management, construction management, groundwater remediation, UST design, Phase I and II environmental assessments, site characterization reports, corrective action plans, quarterly monitoring, discharge monitoring and site closures. His experience includes project management of over 500 commercial, residential and industrial construction projects. He has designed stormwater systems and has the knowledge to know how they work from the inside out. He designed a system to remove surface stormwater runoff using storm lines, drop inlets, cur and gutter systems, and rip-rap channels for a major petroleum company. He knows what works and how they should be maintained for optimum efficiency and use. He has managed the design, construction, maintenance, and repairs for many different clients and projects.

PROJECT EXPERIENCE

- Stormwater Maintenance/Repairs/CCTV Surveys, City of Fairfax, VA
- Pond Dredging, Farrcroft HOA, Fairfax, VA
- Stormwater Structure Replacement/Repairs, Penderbrook Golf Club, Fairfax, VA
- Geophysical Investigation & Utility Mapping, U.S. Capitol Power Plant, Washington, DC
- Wet Utilities and Stormwater Management, Fort Belvoir Residential Communities, Fort Belvoir, VA
- Stormwater Maintenance and Repair Program, Wal-Mart Stores
- Stormwater Construction Management, Fairfax County Construction Management Department
- Construction Management / Field Engineering, Texaco
- Construction Management of Multi-Million Dollar Federal Correctional Institution, Federal Bureau of Prisons
- Wastewater System Upgrades, Virginia Department of Corrections
- Design and Construction Management/Field Engineering, Quarles Petroleum
- Installation/Operation of Groundwater Remediation Systems – Charlottesville Oil Company

EDUCATION

M.A.S., Environmental Policy and Management, University of Denver, CO, 2011

B.S., Integrated Science and Technology, James Madison University, VA, 2004

CERTIFICATIONS

OSHA Hazardous Waste Operations and Emergency Response

OSHA Confined Space Training

OSHA Hazardous Waste Operations and Emergency Response Supervisor

VDEQ Stormwater Management Inspector

VDEQ Stormwater Program Administrator

VDEQ Stormwater Plan Reviewer

VDEQ Stormwater Combined Administrator

YEARS WITH APEX: 4

YEARS OF EXPERIENCE: 11

Andrea Owen Heller

Stormwater Permitting & Compliance Task Manager

Mrs. Heller brings 11 years' experience in Environmental & Stormwater Project Management as well as extensive experience in environmental sampling, water quality analysis, and MS4 Support. Mrs. Heller has managed the District of Columbia's MS4 Storm Water Sampling and Analysis contract for the past six years; she is also assisting on the Consolidated TMDL Implementation Plan and Monitoring project for District Department of the Environment (DDOE). Mrs. Heller has also managed MS4 Phase II Permits for Prince William County Public Schools, Stafford County Public Schools, and Virginia Western Community College. As a part of the MS4 contracts, Apex has conducted wet and dry weather stormwater sampling, illicit discharge detection screenings, employee training, flow monitoring, monitoring equipment installation, EPA Audit Support and stormwater outfall inspections and mapping.

PROJECT EXPERIENCE

- MS4 Phase I Sampling and Analysis, DDOE, Washington, DC
 - Dry weather sampling and analysis
 - Wet weather sampling and analysis
 - Flow Monitoring
- Environmental Services, DDOE, Washington DC
- MS4 Phase II Program Support, Stafford County Public Schools, Stafford, VA
 - Annual Report, Program Plan, TMDL Action Plans
 - Employee Training – Good Housekeeping Practices
 - EPA Audit Support
 - GPS Mapping and IDDE Inspections
 - BMP Inspections
 - Stream Sampling
- MS4 Phase II Program Support, Prince William County Public Schools, Prince William, VA
 - Annual Report, Program Plan, TMDL Action Plans
 - Employee Training – Good Housekeeping Practices
 - EPA Audit Support
 - GPS Mapping and IDDE Inspections
 - BMP Inspections
- MS4 Phase II Program & Sampling Support, VWCC, Roanoke, VA
 - Annual MS4 Report and Program Plan
 - Permit Renewal
 - Employee Training
 - Permit required sampling
- TMDL Implementation Plan and Monitoring, LimnoTech and DDOE, Washington, DC

EDUCATION

M.S., Soil Science, Texas A&M University, 2001

B.S., Environmental Soil Science, Michigan State University, 1998

A.S., Natural Resources, Gogebic Community College, 1996

CERTIFICATIONS

Certified Professional Soil Scientist (CPSS) – ARCPACS

NPDES Permit Writer's Training Course

38-hour Army Corps of Engineers Wetland Delineation & Management Training Program

OSHA Hazardous Waste Operations and Emergency Response

Hazardous Material Specialist Incident Commander

VA DCR Certified Combined Administrator

VDEQ Nutrient Management Planner

YEARS WITH APEX: 12

YEARS OF EXPERIENCE: 14

Jason M. Franti, CPSS *Environmental Task Manager*

Mr. Franti is the lead client contact for environmental services related to development in Virginia and the District of Columbia and brings over 14 years' experience. These tasks include NEPA reports, Environmental Impact Reviews, surveys, wetland delineations, cultural resource investigations, and the comprehensive review of environmental issues related to development projects. Mr. Franti also currently manages the sampling, monitoring, reporting, permitting, database, and correspondence with regulatory agency duties for a RCRA facility remediation site. Mr. Franti was the lead writer of permit renewal application documents for the RCRA Post-Closure Permit and the Corrective Measures Study work plan. Mr. Franti managed field activities for a 13,000 ton contaminated soil removal project around a petroleum pipeline, including all groundwater handling and treatment duties. Mr. Franti has conducted a diverse range of activities including soil classification, sampling, wetland delineation, RPA delineations, and laboratory analyses. Mr. Franti has prepared over 200 Phase I ESAs on residential, commercial and industrial facilities and has conducted Phase II and Phase III activities including geotechnical investigations, geophysical surveys for USTs, subsurface (Geoprobe) investigations, and soil and contaminated media removal and disposal. Mr. Franti also manages turn-key industrial hygiene projects including major abatement projects and comprehensive IH sampling.

PROJECT EXPERIENCE

- Erosion and Sediment Control Plans, Williams Transco
- Erosion and Sediment Control Plans, Colonial Pipeline Company
- RCRA Facility Investigation and Permit Negotiations, Continental Teves, Culpeper, VA
- Environmental Assessment, Northern Virginia Military Installation
- Environmental and Industrial Hygiene Services, Virginia United Methodist Homes
- Environmental Impact Reviews, George Mason University
- Environmental Support for Development, Washington, DC
- Site Investigation and Remediation, Colonial Pipeline Company
- Facility-Specific SPCC and Emergency Response Plan Updates
- Phase I ESAs

EDUCATION

BA, Geology, George Mason University, 1998
BA, Geography, George Mason University, 1999

CERTIFICATIONS

OSHA HAZWOPER 40-hour Training
OSHA HAZWOPER 8-hour Refresher
DOT Supervisor Training
GHS Training

YEARS WITH APEX: 13

YEARS OF EXPERIENCE: 15

Robert Wagner *Environmental Task Manager*

Mr. Wagner is a remediation geologist/stormwater professional with over 15 years of experience in design and construction of remedial projects involving both groundwater and surface water impact. He has performed and managed site characterization and environmental investigations in both Virginia and North Carolina. Mr. Wagner has completed a full stormwater assessment including stormwater system inspections and cleanout of stormwater conveyance system components such as drop inlets, curb inlets, and subgrade stormwater pipes of varying sizes. He has implemented TMDL reduction requirements for TSS and PCB and has prepared a PCB Pollutant Minimization Plan (PMP). He has worked on maintenance, installation, and repair of trash racks, outfall maintenance, and construction services including slope failures, system cleanout, and sinkhole repairs. He is a client liaison between local, state, and federal regulatory agencies to implement water resource projects and coordinated with local and state regulatory authorities during site construction and post-construction.

PROJECT EXPERIENCE

- Roanoke Cement, Catawba Creek Restoration Project, Trouville, VA
- RCRA Facility Investigation, Spill Prevention Control and Countermeasures (SPCC), Stormwater Pollution Prevention Plan (SWPPP), Steel Dynamics (formerly Roanoke Electric Steel), Roanoke, VA
- Stormwater BMP Design, Construction, Implementation, Steel Dynamics (formerly Roanoke Electric Steel), Roanoke, VA
- Environmental Remediation and Asbestos Abatement, Former Salem Tannery and West Salem Plaza, Salem, VA
- Commonwealth of Virginia Department of Environmental Quality State Lead Contract (Various Location, VA)
- Stormwater Maintenance and Repairs, New Millennium Building Systems
- Stormwater Compliance Inspections, Wal-Mart stores, Multiple locations VA and WV
- Stormwater Services, National Truck Stop Retailer, Multiple locations in VA and NC

RFP V.B.4 Offeror Data Sheet, included as Attachment A to this RFP.

The completed Offeror Data Sheet is presented on the following page.

ATTACHMENT A
OFFEROR DATA SHEET
TO BE COMPLETED BY OFFEROR

1. QUALIFICATIONS OF OFFEROR: Offerors must have the capability and capacity in all respects to fully satisfy the contractual requirements.
2. YEARS IN BUSINESS: Indicate the length of time you have been in business providing these types of goods and services.
Years 26 Months 10
3. REFERENCES: Indicate below a listing of at least five (5) organizations, either commercial or governmental/educational, that your agency is servicing. Include the name and address of the person the purchasing agency has your permission to contact.

CLIENT	LENGTH OF SERVICE	ADDRESS	CONTACT PERSON/PHONE #
VDOT	10 yrs	4975 Alliance Drive, Fairfax, VA 22030	Patrick Stark (703) 383-2745
PWCS	9 yrs	P.O. Box 389, Manassas, VA 20108	Ray Edelstein (703) 791-7276
SCPS	9 yrs	31 Stafford Avenue, Stafford, VA 22554	Jennifer Spindle (540) 658-6542
VWCC	8 yrs	P.O. Box 14007, Roanoke, VA 24038	Kevin Witter (540) 857-6481

4. List full names and addresses of Offeror and any branch offices which may be responsible for administering the contract.

Apex Companies, LLC, 8854 Rixlew Lane, Manassas, VA

With Support from: Apex Companies, LLC, 6711 Peters Creek Rd, #201, Roanoke, VA 24019

Apex Companies, LLC, 203 Wylderose Court, Midlothian, VA 23113

3. RELATIONSHIP WITH THE COMMONWEALTH OF VIRGINIA: Is any member of the firm an employee of the Commonwealth of Virginia who has a personal interest in this contract pursuant to the [CODE OF VIRGINIA](#), SECTION 2.2-3100 – 3131?

☐ YES ☒ NO

IF YES, EXPLAIN: _____

RETURN OF THIS PAGE IS REQUIRED

RFP V.B.5 Small Business Subcontracting Plan, included as Attachment B to this RFP. Offeror shall provide a Small Business Subcontracting plan which summarizes the planned utilization of DMBE-certified small businesses which include businesses owned by women and minorities, when they have received DMBE small business certification, under the contract to be awarded as a result of this solicitation. This is a requirement for all prime contracts in excess of \$100,000.

The completed Small Business Subcontracting Plan is presented on the following pages.

ATTACHMENT B

SWAM (Small, Women and Minority-owned Businesses) Utilization Plan

Offeror Name: Apex Companies, LLC **Preparer Name:** John Strecker **Date:** 02/05/15

Is your firm a **Small Business Enterprise** certified by the Department of Minority Business Enterprise?

Yes _____ No ✓

If yes, certification number: _____ Certification date: _____

Is your firm a **Woman-owned Business Enterprise** certified by the Department of Minority Business Enterprise? Yes _____ No ✓

If yes, certification number: _____ Certification date: _____

Is your firm a **Minority-Owned Business Enterprise** certified by the Department of Minority Business Enterprise? Yes _____ No ✓

If yes, certification number: _____ Certification date: _____

Instructions: *Populate the table below to show your firm's plans for utilization of small, women-owned and minority-owned business enterprises in the performance of the Collection Services contract. Describe plans to utilize SWAMs businesses as part of joint ventures, partnerships, subcontractors, suppliers, etc.*

Small Business: "Small business " means a business, independently owned or operated by one or more persons who are citizens of the United States or non-citizens who are in full compliance with United States immigration law, which, together with affiliates, has 250 or fewer employees, or average annual gross receipts of \$10 million or less averaged over the previous three years.

Woman-Owned Business Enterprise: A business concern which is at least 51 percent owned by one or more women who are U.S. citizens or legal resident aliens, or in the case of a corporation, partnership or limited liability company or other entity, at least 51 percent of the equity ownership interest in which is owned by one or more women, and whose management and daily business operations are controlled by one or more of such individuals. **For purposes of the SWAM**

Program, all certified women-owned businesses are also a small business enterprise.

Minority-Owned Business Enterprise: A business concern which is at least 51 percent owned by one or more minorities or in the case of a corporation, partnership or limited liability company or other entity, at least 51 percent of the equity ownership interest in which is owned by one or more minorities and whose management and daily business operations are controlled by one or more of such individuals. **For purposes of the SWAM Program, all certified minority-owned businesses are also a small business enterprise.**

All small, women, and minority owned businesses must be certified by the Commonwealth of Virginia Department of Minority Business Enterprise (DMBE) to be counted in the SWAM program.

Certification applications are available through DMBE at 800-223-0671 in Virginia, 804-786-6585 outside Virginia, or online at www.dmbv.virginia.gov (Customer Service).

RETURN OF THIS PAGE IS REQUIRED

ATTACHMENT B (CNT'D)

Small, Women and Minority-owned Businesses (SWaM) Utilization Plan

Procurement Name and Number: RFP #MPM-840 Stormwater Structures Maintenance
 Listing of Sub-Contractors, to include, Small, Woman Owned and Minority Owned Businesses
 for this Bid/Proposal and Subsequent Contract

02/05/15
 Date Form Completed

Offeror / Proposer:
Apex Companies, LLC
 Firm

8854 Rixlew Lane, Manassas, VA 20109
 Address

John Strecker / 703-396-6730
 Contact Person/No.

Sub-Contractor's Name and Address	Contact Person & Phone Number	DMBE Certification Number	Services or Materials Provided	Total Subcontractor Contract Amount (to include change orders)	Total Dollars Paid Subcontractor to date (to be submitted with request for payment from JMU)
AWS Laboratories, Inc. 2109A N. Hamilton St. Richmond, VA	Carmela Tombes (804) 358-8295	DOT MBE 01-549	Analytical Testing Services		
WEL, Inc. 12236 Richmond Hwy. Concord, VA 24538	Pat Quilter (800) 847-2455	9832S	Vac Truck		
RECO BioTechnologies 710 Hospital Street Richmond, VA 23219	John Beck (804) 644-2800	671982	Vacuum Truck and Disposal Services		
Lyttle Utilities, Inc. 2210 E. Balt Boulevard PO Box 24205 Richmond, VA 23224	Benjamin Chapman (804) 232-5774	653912			

(Form shall be submitted with proposal and if awarded, again with submission of each request for payment)

Revised 3/20/14 (ABS)

RETURN OF THIS PAGE IS REQUIRED

RFP V.B.6 Identify the amount of sales your company had during the last twelve months with each VASCUPP Member Institution. A list of VASCUPP Members can be found at www.VASCUPP.org.

Apex has performed work at the following VASCUPP Member Institutions within the last twelve (12) months:

James Madison University
May 29, 2014 – December 31, 2014
BMP Maintenance on Stormceptor Units
\$6,601

James Madison University
February 19, 2014
Annual Maintenance of Underground BMPs
\$7,629

George Mason University
October 3, 2014 – December 31, 2014
Tree Survey at the Fairfax Campus
\$2,100

RFP V.B.7 Proposed Cost. See Section X. "Pricing Schedule" of this Request for Proposal.

Apex is pleased to present our rates as outlined in the RFP below.

Services	Normal Working		Emergency hours
Principal	\$180.00	per hour	5PM-8AM Monday thru Friday, Weekends, Holidays
Certified Safety Professional/Sr. Project Manager	\$165.00	per hour	5PM-8AM Monday thru Friday, Weekends, Holidays
Environmental Engineer/ Professional Geologist	\$160.00	per hour	5PM-8AM Monday thru Friday, Weekends, Holidays
Project Manager	\$140.00	per hour	5PM-8AM Monday thru Friday, Weekends, Holidays
Equipment Manager	\$75.00	per hour	5PM-8AM Monday thru Friday, Weekends, Holidays
Responsible Land Disturber	\$115.00	per hour	5PM-8AM Monday thru Friday, Weekends, Holidays
Staff Geologist	\$75.00	per hour	5PM-8AM Monday thru Friday, Weekends, Holidays
Environmental Scientist	\$65.00	per hour	5PM-8AM Monday thru Friday, Weekends, Holidays
Draftsperson/ CADD Operator	\$70.00	per hour	5PM-8AM Monday thru Friday, Weekends, Holidays
Field Technician	\$65.00	per hour	5PM-8AM Monday thru Friday, Weekends, Holidays
Administrative/Documents Manager	\$55.00	per hour	5PM-8AM Monday thru Friday, Weekends, Holidays
Supervisor	\$105.00	per hour	5PM-8AM Monday thru Friday, Weekends, Holidays
Laborer	\$55.00	per hour	5PM-8AM Monday thru Friday, Weekends, Holidays
Vacuum Truck and operator services	\$200.00	per hour	Daily Mobilization Fee: \$200.00
Confined Space Entry cost per crew (#2 crew members)	\$175.00	per hour	Daily Mobilization Fee: \$150.00
Liquids Hauling Charge	\$0.30	per gallon	5PM-8AM Monday thru Friday, Weekends, Holidays
Solids Hauling Charge	\$1.75	per gallon	5PM-8AM Monday thru Friday, Weekends, Holidays
Pressure Wash Fee	\$75.00	per event	5PM-8AM Monday thru Friday, Weekends, Holidays
Equipment			
Trackhoe	\$1,200.00	per day	5PM-8AM Monday thru Friday, Weekends, Holidays
Mini Excavator	\$700.00	per day	5PM-8AM Monday thru Friday, Weekends, Holidays
Backhoe	\$400.00	per day	5PM-8AM Monday thru Friday, Weekends, Holidays
Skid Steer	\$350.00	per day	5PM-8AM Monday thru Friday, Weekends, Holidays
Single-axle dump	\$550.00	per day	5PM-8AM Monday thru Friday, Weekends, Holidays
Tandem Axle Dump Truck	\$700.00	per day	5PM-8AM Monday thru Friday, Weekends, Holidays
Service truck (4 hour minimum)	\$150.00	per day	5PM-8AM Monday thru Friday, Weekends, Holidays
CCTV Equipment with Trailer	\$1,500.00	per day	5PM-8AM Monday thru Friday, Weekends, Holidays
Dewatering Pump (6") and Hoses	\$450.00	per day	5PM-8AM Monday thru Friday, Weekends, Holidays
Chipper	\$525.00	per day	5PM-8AM Monday thru Friday, Weekends, Holidays
Other Direct Costs			
Provide and install replacement backfill	\$60.00	per ton	5PM-8AM Monday thru Friday, Weekends, Holidays
Class I Rip Rap	\$70.00	per ton	5PM-8AM Monday thru Friday, Weekends, Holidays
Clearing and Grubbing Crew	\$2,500.00	per day	5PM-8AM Monday thru Friday, Weekends, Holidays
Erosion Control Mat with Staples	\$105.00	per roll	5PM-8AM Monday thru Friday, Weekends, Holidays
Soil and water analysis (standard turnaround)			5PM-8AM Monday thru Friday, Weekends, Holidays
-Characterization	\$700.00	each	5PM-8AM Monday thru Friday, Weekends, Holidays
-Total petroleum hydrocarbon (TPH)	\$150.00	each	5PM-8AM Monday thru Friday, Weekends, Holidays
-Benzene, toluene, ethylbenzene, and xylenes (BTEX)	\$70.00	each	5PM-8AM Monday thru Friday, Weekends, Holidays

❖ Equipment rates include Mobilization and Demobilization costs but exclude operator.